

Datasheet for ABIN954551
anti-RILPL1 antibody (C-Term)[Go to Product page](#)

2 Images

Overview

Quantity:	0.4 mL
Target:	RILPL1
Binding Specificity:	AA 344-374, C-Term
Reactivity:	Human, Mouse
Host:	Rabbit
Clonality:	Polyclonal
Conjugate:	This RILPL1 antibody is un-conjugated
Application:	Western Blotting (WB), Immunohistochemistry (Paraffin-embedded Sections) (IHC (p)), Enzyme Immunoassay (EIA)

Product Details

Immunogen:	KLH conjugated synthetic peptide between 344-374 amino acids from the C-terminal region of Human RILPL1. Genename: RILPL1
Isotype:	Ig Fraction
Specificity:	This antibody recognizes Human and Mouse RILPL1 (C-term).
Purification:	Affinity Chromatography on Protein A

Target Details

Target:	RILPL1
Alternative Name:	RILPL1 (RILPL1 Products)

Target Details

Background:	Synonyms: RILP-like protein 1, Rab-interacting lysosomal-like protein 1
Molecular Weight:	47108 Da
Gene ID:	353116
NCBI Accession:	NP_847884

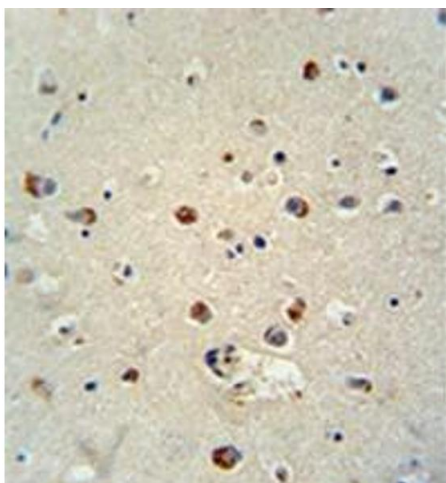
Application Details

Application Notes:	Optimal working dilution should be determined by the investigator.
Restrictions:	For Research Use only

Handling

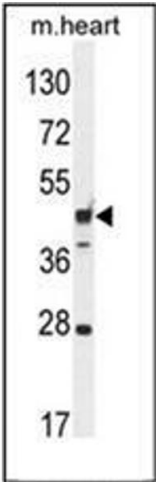
Format:	Liquid
Concentration:	0.25 mg/mL
Buffer:	PBS, 0.09 % Sodium Azide
Preservative:	Sodium azide
Precaution of Use:	This product contains sodium azide: a POISONOUS AND HAZARDOUS SUBSTANCE which should be handled by trained staff only.
Handling Advice:	Avoid repeated freezing and thawing.
Storage:	4 °C/-20 °C
Storage Comment:	Store undiluted at 2-8 °C for one month or (in aliquots) at -20 °C for longer.

Images



Immunohistochemistry (Paraffin-embedded Sections)

Image 1. Formalin fixed, paraffin embedded human brain tissue stained with RILPL1 Antibody (C-term) followed by peroxidase conjugation of the secondary antibody and DAB staining. This data demonstrates the use of the RILPL1 antibody (C-term) for immunohistochemistry. Clinical relevance has not been evaluated.



Western Blotting

Image 2. Western blot analysis of RILPL1 Antibody (C-term) in Mouse heart tissue lysates (35ug/lane). This demonstrates the RILPL1 antibody detected the RILPL1 protein (arrow).