

Datasheet for ABIN954552
anti-RILPL2 antibody (Middle Region)



[Go to Product page](#)

3 Images

Overview

Quantity:	0.4 mL
Target:	RILPL2
Binding Specificity:	AA 120-149, Middle Region
Reactivity:	Human, Hamster
Host:	Rabbit
Clonality:	Polyclonal
Conjugate:	This RILPL2 antibody is un-conjugated
Application:	Western Blotting (WB), Immunohistochemistry (Paraffin-embedded Sections) (IHC (p)), Enzyme Immunoassay (EIA)

Product Details

Immunogen:	KLH conjugated synthetic peptide between 120-149 amino acids from the Central region of Human RILPL2. Genename: RILPL2
Isotype:	Ig Fraction
Specificity:	This antibody recognizes Human and Hamster RILPL2 (Center).
Purification:	Affinity Chromatography on Protein A

Target Details

Target:	RILPL2
Alternative Name:	RILPL2 (RILPL2 Products)

Target Details

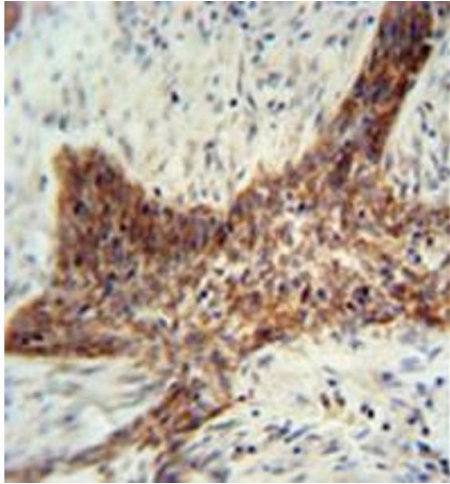
Background:	Does not regulate lysosomal morphology and distribution.Synonyms: RILP-like protein 2, RLP2, Rab-interacting lysosomal protein-like 2, p40phox-binding protein
Molecular Weight:	23986 Da
Gene ID:	196383
NCBI Accession:	NP_659495

Application Details

Application Notes:	Optimal working dilution should be determined by the investigator.
Restrictions:	For Research Use only

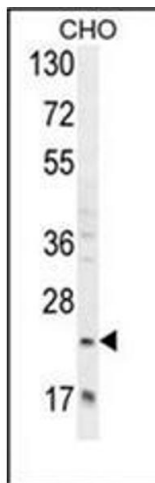
Handling

Format:	Liquid
Concentration:	0.25 mg/mL
Buffer:	PBS, 0.09 % Sodium Azide
Preservative:	Sodium azide
Precaution of Use:	This product contains sodium azide: a POISONOUS AND HAZARDOUS SUBSTANCE which should be handled by trained staff only.
Handling Advice:	Avoid repeated freezing and thawing.
Storage:	4 °C/-20 °C
Storage Comment:	Store undiluted at 2-8 °C for one month or (in aliquots) at -20 °C for longer.



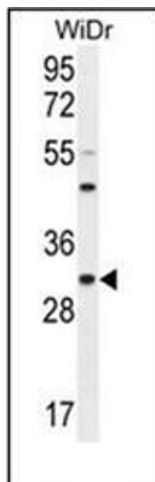
Immunohistochemistry (Paraffin-embedded Sections)

Image 1. Formalin fixed, paraffin embedded human lung carcinoma stained with RILPL2 Antibody (Center) followed by peroxidase conjugation of the secondary antibody and DAB staining. This data demonstrates the use of the RILPL2 antibody (Center) for immunohistochemistry. Clinical relevance has not been evaluated.



Western Blotting

Image 2. Western blot analysis of RILPL2 Antibody (Center) in CHO cell line lysates (35ug/lane). This demonstrates the RILPL2 antibody detected the RILPL2 protein (arrow).



Western Blotting

Image 3. Western blot analysis of RILPL2 Antibody (Center) in WiDr cell line lysates (35ug/lane). This demonstrates the RILPL2 antibody detected the RILPL2 protein (arrow).