

Datasheet for ABIN954556
anti-CLVS2 antibody (C-Term)[Go to Product page](#)

2 Images

Overview

Quantity:	0.4 mL
Target:	CLVS2
Binding Specificity:	AA 258-287, C-Term
Reactivity:	Human, Mouse
Host:	Rabbit
Clonality:	Polyclonal
Conjugate:	This CLVS2 antibody is un-conjugated
Application:	Western Blotting (WB), Immunohistochemistry (Paraffin-embedded Sections) (IHC (p)), Enzyme Immunoassay (EIA)

Product Details

Immunogen:	KLH conjugated synthetic peptide between 258-287 amino acids from the C-terminal region of human RLBP1L2 Genename: CLVS2
Isotype:	Ig Fraction
Specificity:	This antibody recognizes Mouse RLBP1L2 (C-term).
Purification:	Affinity Chromatography on Protein A

Target Details

Target:	CLVS2
Alternative Name:	RLBP1L2 (CLVS2 Products)

Target Details

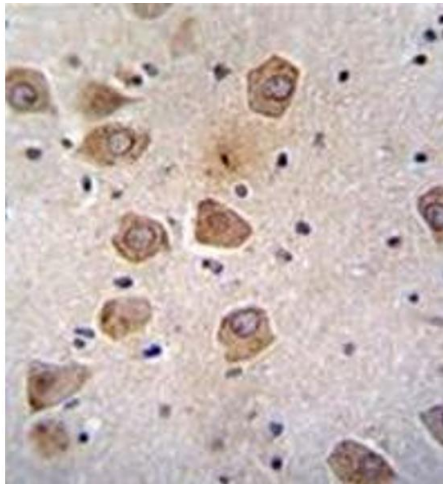
Background:	Required for normal morphology of late endosomes and/or lysosomes in neurons (By similarity). Binds phosphatidylinositol 3,5-bisphosphate (PtdIns(3,5)P2).Synonyms: C6orf212, C6orf213, CLVS2, Clavesin-2
Molecular Weight:	38000 Da
Gene ID:	134829
NCBI Accession:	NP_001010852

Application Details

Application Notes:	Optimal working dilution should be determined by the investigator.
Restrictions:	For Research Use only

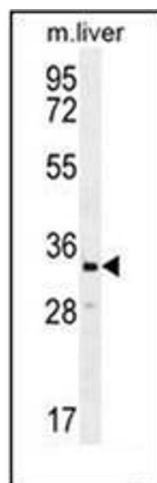
Handling

Format:	Liquid
Concentration:	0.25 mg/mL
Buffer:	PBS, 0.09 % Sodium Azide
Preservative:	Sodium azide
Precaution of Use:	This product contains sodium azide: a POISONOUS AND HAZARDOUS SUBSTANCE which should be handled by trained staff only.
Handling Advice:	Avoid repeated freezing and thawing.
Storage:	4 °C/-20 °C
Storage Comment:	Store undiluted at 2-8 °C for one month or (in aliquots) at -20 °C for longer.



Immunohistochemistry (Paraffin-embedded Sections)

Image 1. Formalin fixed, paraffin embedded human brain tissue stained with RLBP1L2 Antibody (C-term) followed by peroxidase conjugation of the secondary antibody and DAB staining. This data demonstrates the use of RLBP1L2 Antibody (C-term) for immunohistochemistry. Clinical relevance has not been evaluated.



Western Blotting

Image 2. Western blot analysis of RLBP1L2 Antibody (C-term) in Mouse liver tissue lysates (35ug/lane). This demonstrates the RLBP1L2 antibody detected the RLBP1L2 protein (arrow).