

Datasheet for ABIN954570  
**anti-RNF185 antibody (Middle Region)**[Go to Product page](#)

## 3 Images

## Overview

Quantity:	0.4 mL
Target:	RNF185
Binding Specificity:	AA 91-121, Middle Region
Reactivity:	Human, Mouse, Hamster
Host:	Rabbit
Clonality:	Polyclonal
Conjugate:	This RNF185 antibody is un-conjugated
Application:	Western Blotting (WB), Flow Cytometry (FACS), Enzyme Immunoassay (EIA)

## Product Details

Immunogen:	KLH conjugated synthetic peptide between 91-121 amino acids from the Central region of Human RNF185. Genename: RNF185
Isotype:	Ig Fraction
Specificity:	This antibody recognizes RNF185 (Center).
Purification:	Affinity Chromatography on Protein A

## Target Details

Target:	RNF185
Alternative Name:	RNF185 ( <a href="#">RNF185 Products</a> )
Background:	Synonyms: RING finger protein 185

## Target Details

Gene ID:	91445
NCBI Accession:	<a href="#">NP_001129297</a>

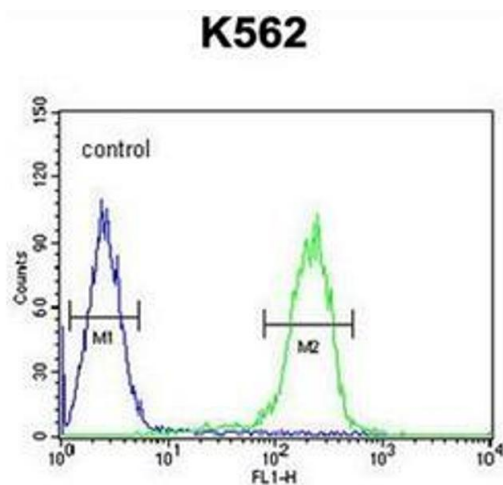
## Application Details

Application Notes:	Optimal working dilution should be determined by the investigator.
Restrictions:	For Research Use only

## Handling

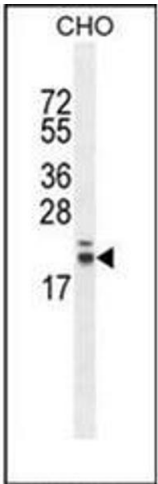
Format:	Liquid
Concentration:	0.25 mg/mL
Buffer:	PBS, 0.09 % Sodium Azide
Preservative:	Sodium azide
Precaution of Use:	This product contains sodium azide: a POISONOUS AND HAZARDOUS SUBSTANCE which should be handled by trained staff only.
Handling Advice:	Avoid repeated freezing and thawing.
Storage:	4 °C/-20 °C
Storage Comment:	Store undiluted at 2-8 °C for one month or (in aliquots) at -20 °C for longer.

## Images



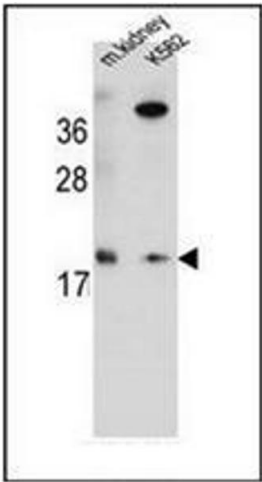
### Flow Cytometry

**Image 1.** Flow cytometric analysis of K562 cells using RNF185 Antibody (right histogram) compared to a negative control cell (left histogram). FITC-conjugated goat-anti-rabbit secondary antibodies were used for the analysis.



#### Western Blotting

**Image 2.** Western blot analysis of RNF185 Antibody in CHO cell line lysates (35ug/lane). This demonstrates the RNF185 antibody detected the RNF185 protein (arrow).



#### Western Blotting

**Image 3.** Western blot analysis of RNF185 Antibody in Mouse kidney tissue and K562 cell line lysates (35ug/lane). This demonstrates the RNF185 antibody detected the RNF185 protein (arrow).