

Datasheet for ABIN954573
anti-RNF215 antibody (C-Term)

3 Images

[Go to Product page](#)

Overview

Quantity:	0.4 mL
Target:	RNF215
Binding Specificity:	AA 273-303, C-Term
Reactivity:	Human, Mouse
Host:	Rabbit
Clonality:	Polyclonal
Conjugate:	This RNF215 antibody is un-conjugated
Application:	Western Blotting (WB), Immunohistochemistry (Paraffin-embedded Sections) (IHC (p)), Enzyme Immunoassay (EIA)

Product Details

Immunogen:	KLH conjugated synthetic peptide between 273-303 amino acids from the C-terminal region of human RNF215
Isotype:	Ig Fraction
Specificity:	This antibody reacts to RNF215.
Cross-Reactivity (Details):	Species reactivity (tested): Human and Mouse.
Purification:	Affinity chromatography on Protein A

Target Details

Target:	RNF215
---------	--------

Target Details

Alternative Name:	RNF215 (RNF215 Products)
Background:	Synonyms: RING finger protein 215
Gene ID:	200312
NCBI Accession:	NP_001017981

Application Details

Application Notes:	Optimal working dilution should be determined by the investigator.
Restrictions:	For Research Use only

Handling

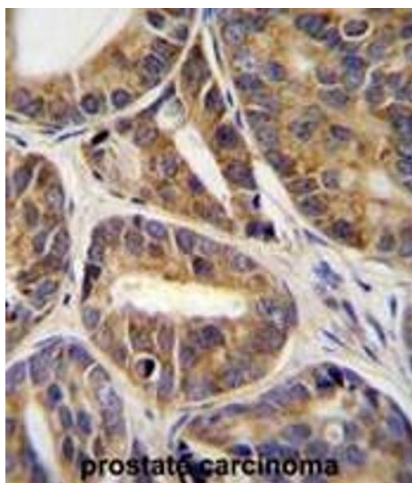
Format:	Liquid
Concentration:	0.25 mg/mL
Buffer:	PBS, 0.09 % (W/V) sodium azide
Preservative:	Sodium azide
Precaution of Use:	This product contains sodium azide: a POISONOUS AND HAZARDOUS SUBSTANCE which should be handled by trained staff only.
Handling Advice:	Avoid repeated freezing and thawing.
Storage:	4 °C/-20 °C
Storage Comment:	Store the antibody undiluted at 2-8 °C for one month or (in aliquots) at -20 °C for longer.

Images



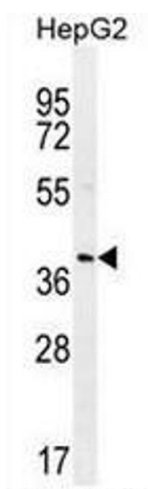
Western Blotting

Image 1. RNF215 Antibody (C-term) western blot analysis in mouse lung tissue lysates (35µg/lane). This demonstrates the RNF215 antibody detected the RNF215 protein (arrow).



Immunohistochemistry (Paraffin-embedded Sections)

Image 2. RNF215 Antibody (C-term) immunohistochemistry analysis in formalin fixed and paraffin embedded human prostate carcinoma tissue followed by peroxidase conjugation of the secondary antibody and DAB staining. This data demonstrates the use of RNF215 Antibody (C-term) for immunohistochemistry. Clinical relevance has not been evaluated.



Western Blotting

Image 3. RNF215 Antibody (C-term) western blot analysis in HepG2 cell line lysates (35µg/lane). This demonstrates the RNF215 antibody detected the RNF215 protein (arrow).