

Datasheet for ABIN954580
anti-RPAIN antibody (N-Term)[Go to Product page](#)

1 Image

Overview

Quantity:	0.4 mL
Target:	RPAIN
Binding Specificity:	AA 15-44, N-Term
Reactivity:	Human
Host:	Rabbit
Clonality:	Polyclonal
Application:	Western Blotting (WB), Enzyme Immunoassay (EIA)

Product Details

Immunogen:	KLH conjugated synthetic peptide between 15-44 amino acids from the N-terminal region of human RPAIN
Isotype:	Ig Fraction
Specificity:	This antibody reacts to RPAIN.
Cross-Reactivity (Details):	Species reactivity (tested):Human.
Purification:	Affinity chromatography on Protein A

Target Details

Target:	RPAIN
Alternative Name:	RPAIN / RIP (RPAIN Products)
Background:	RPAIN mediates the import of RPA complex into the nucleus, possibly via some interaction with

Target Details

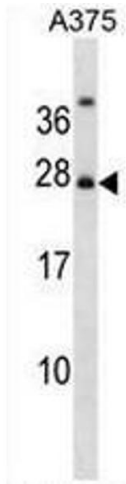
	importin beta. Isoform 2 is sumoylated and mediates the localization of RPA complex into the PML body of the nucleus, thereby participating in RPA function in DNA metabolism.Synonyms: RPA-interacting protein
Molecular Weight:	24784 Da
Gene ID:	84268
NCBI Accession:	NP_001028174
Pathways:	Protein targeting to Nucleus

Application Details

Application Notes:	Optimal working dilution should be determined by the investigator.
Restrictions:	For Research Use only

Handling

Format:	Liquid
Concentration:	0.25 mg/mL
Buffer:	PBS, 0.09 % (W/V) sodium azide
Preservative:	Sodium azide
Precaution of Use:	This product contains sodium azide: a POISONOUS AND HAZARDOUS SUBSTANCE which should be handled by trained staff only.
Handling Advice:	Avoid repeated freezing and thawing.
Storage:	4 °C/-20 °C
Storage Comment:	Store the antibody undiluted at 2-8 °C for one month or (in aliquots) at -20 °C for longer.



Western Blotting

Image 1. RPAIN Antibody (N-term) western blot analysis in A375 cell line lysates (35µg/lane). This demonstrates the RPAIN antibody detected the RPAIN protein (arrow).