

Datasheet for ABIN954583  
**anti-RPH3AL antibody (C-Term)**[Go to Product page](#)

## 2 Images

## Overview

Quantity:	0.4 mL
Target:	RPH3AL
Binding Specificity:	AA 211-241, C-Term
Reactivity:	Human
Host:	Rabbit
Clonality:	Polyclonal
Application:	Western Blotting (WB), Immunohistochemistry (Paraffin-embedded Sections) (IHC (p)), Enzyme Immunoassay (EIA)

## Product Details

Immunogen:	KLH conjugated synthetic peptide between 211-241 amino acids from the C-terminal region of human RPH3AL
Isotype:	Ig Fraction
Specificity:	This antibody reacts to RPH3AL.
Cross-Reactivity (Details):	Species reactivity (tested):Human.
Purification:	Affinity chromatography on Protein A

## Target Details

Target:	RPH3AL
Alternative Name:	RPH3AL / NOC2 ( <a href="#">RPH3AL Products</a> )

## Target Details

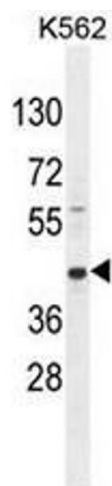
Background:	The protein encoded by this gene plays a direct regulatory role in calcium-ion-dependent exocytosis in both endocrine and exocrine cells and plays a key role in insulin secretion by pancreatic cells. This gene is likely a tumor suppressor. Alternative splicing results in multiple transcript variants encoding distinct isoforms.Synonyms: No C2 domains protein, Rab effector Noc2, Rabphilin-3A-like protein
Molecular Weight:	34464 Da
Gene ID:	9501
NCBI Accession:	<a href="#">NP_001177340</a>
Pathways:	<a href="#">Carbohydrate Homeostasis</a> , <a href="#">Regulation of G-Protein Coupled Receptor Protein Signaling</a>

## Application Details

Application Notes:	Optimal working dilution should be determined by the investigator.
Restrictions:	For Research Use only

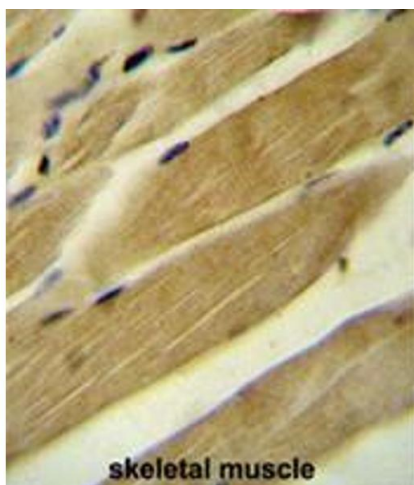
## Handling

Format:	Liquid
Concentration:	0.25 mg/mL
Buffer:	PBS, 0.09 % (W/V) sodium azide.
Preservative:	Sodium azide
Precaution of Use:	This product contains sodium azide: a POISONOUS AND HAZARDOUS SUBSTANCE which should be handled by trained staff only.
Handling Advice:	Avoid repeated freezing and thawing.
Storage:	4 °C/-20 °C
Storage Comment:	Store the antibody undiluted at 2-8 °C for one month or (in aliquots) at -20 °C for longer.



#### Western Blotting

**Image 1.** RPH3AL Antibody (C-term) western blot analysis in K562 cell line lysates (35µg/lane). This demonstrates the RPH3AL antibody detected the RPH3AL protein (arrow).



#### Immunohistochemistry (Paraffin-embedded Sections)

**Image 2.** RPH3A Antibody (C-term) immunohistochemistry analysis in formalin fixed and paraffin embedded human skeletal muscle followed by peroxidase conjugation of the secondary antibody and DAB staining. This data demonstrates the use of the RPH3A Antibody (C-term) for immunohistochemistry. Clinical relevance has not been evaluated.