

Datasheet for ABIN954588
anti-RPL18A antibody (C-Term)

3 Images

[Go to Product page](#)

Overview

Quantity:	0.4 mL
Target:	RPL18A
Binding Specificity:	C-Term
Reactivity:	Human, Mouse
Host:	Rabbit
Clonality:	Polyclonal
Application:	Western Blotting (WB), Immunohistochemistry (Paraffin-embedded Sections) (IHC (p)), Enzyme Immunoassay (EIA)

Product Details

Immunogen:	KLH conjugated synthetic peptide selected from the C-terminal region of Human RPL18A. Genename: RPL18A
Isotype:	Ig Fraction
Specificity:	This antibody recognizes RPL18A (C-term).
Cross-Reactivity (Details):	Species reactivity (tested): Human, Mouse.
Purification:	Protein A column, followed by peptide Affinity Purification

Target Details

Target:	RPL18A
Alternative Name:	RPL18A (RPL18A Products)

Target Details

Background: Ribosomes, the organelles that catalyze protein synthesis, consist of a small 40S subunit and a large 60S subunit. Together these subunits are composed of 4 RNA species and approximately 80 structurally distinct proteins. RPL18A is a ribosomal protein that is a component of the 60S subunit. The protein belongs to the L18AE family of ribosomal proteins. It is located in the cytoplasm. Synonyms: 60S ribosomal protein L18a

Molecular Weight: 20762 Da

Gene ID: 6142

NCBI Accession: [NP_000971](#)

Application Details

Application Notes: Optimal working dilution should be determined by the investigator.

Restrictions: For Research Use only

Handling

Format: Liquid

Concentration: 0.25 mg/mL

Buffer: PBS, 0.09 % (W/V) Sodium Azide

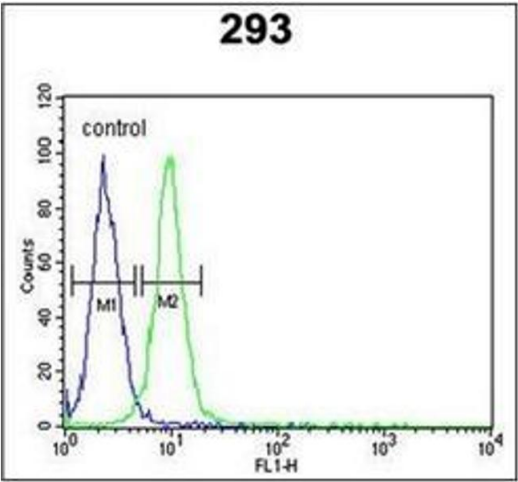
Preservative: Sodium azide

Precaution of Use: This product contains sodium azide: a POISONOUS AND HAZARDOUS SUBSTANCE which should be handled by trained staff only.

Handling Advice: Avoid repeated freezing and thawing.

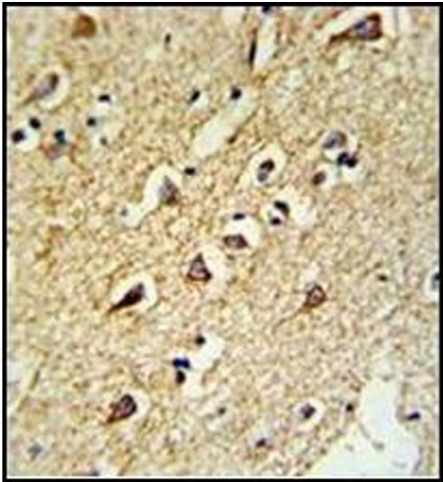
Storage: 4 °C/-20 °C

Storage Comment: Store the antibody undiluted at 2-8 °C for one month or (in aliquots) at -20 °C for longer.



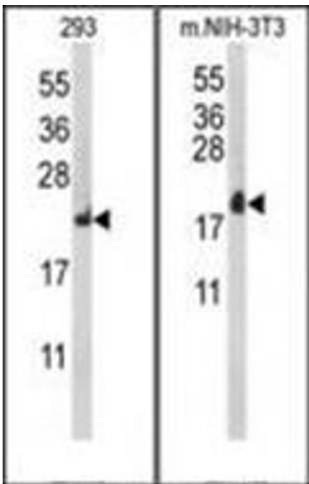
Flow Cytometry

Image 1. Flow Cytometric analysis of 293 cells (right histogram) using RPL18A Antibody (C-term) Cat.-No AP53710PU-N compared to a negative control cell (left histogram). FITC-conjugated goat-anti-rabbit secondary antibodies were used for the analysis.



Immunohistochemistry (Paraffin-embedded Sections)

Image 2. Formalin-Fixed, Paraffin-Embedded Human brain tissue reacted with RPL18A Antibody (C-term), which was peroxidase-conjugated to the secondary antibody, followed by DAB staining. This data demonstrates the use of this antibody for immunohistochemistry. Clinical relevance has not been evaluated.



Western Blotting

Image 3. Western blot analysis of RPL18A Antibody (C-term) Cat.-No AP53710PU-N in HeLa, 293 cell line lysates (35ug/lane). RPL18A (arrow) was detected using the purified Pab.