



[Go to Product page](#)

Datasheet for ABIN954595
anti-RPL35 antibody (C-Term)

3 Images

Overview

Quantity:	0.4 mL
Target:	RPL35
Binding Specificity:	AA 85-115, C-Term
Reactivity:	Human, Mouse
Host:	Rabbit
Clonality:	Polyclonal
Conjugate:	This RPL35 antibody is un-conjugated
Application:	Western Blotting (WB), Immunohistochemistry (Paraffin-embedded Sections) (IHC (p)), Enzyme Immunoassay (EIA)

Product Details

Immunogen:	KLH conjugated synthetic peptide between 85-115 amino acids from the C-terminal region of Human RPL35. Genename: RPL35
Isotype:	Ig Fraction
Specificity:	Recognizes RPL35 (C-term)
Purification:	Protein A column followed by peptide Affinity purification

Target Details

Target:	RPL35
Alternative Name:	RPL35 (RPL35 Products)

Target Details

Background: Ribosomes, the organelles that catalyze protein synthesis, consist of a small 40S subunit and a large 60S subunit. Together these subunits are composed of 4 RNA species and approximately 80 structurally distinct proteins. This gene encodes a ribosomal protein that is a component of the 60S subunit. The protein belongs to the L29P family of ribosomal proteins. It is located in the cytoplasm. As is typical for genes encoding ribosomal proteins, there are multiple processed pseudogenes of this gene dispersed through the genome. Synonyms: 60S ribosomal protein L35

Gene ID: 11224

NCBI Accession: [NP_009140](#)

Application Details

Application Notes: Optimal working dilution should be determined by the investigator.

Restrictions: For Research Use only

Handling

Format: Liquid

Concentration: 0.25 mg/mL

Buffer: PBS with 0.09 % (W/V) Sodium Azide as preservative

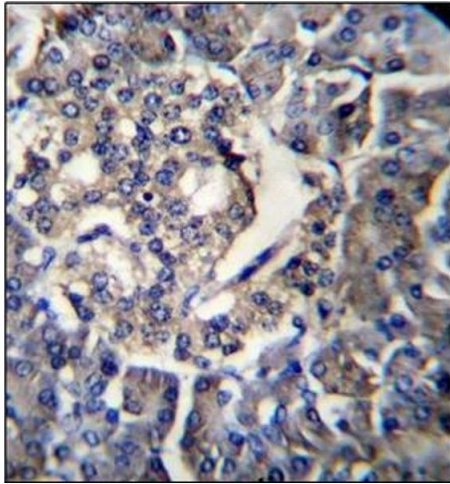
Preservative: Sodium azide

Precaution of Use: This product contains sodium azide: a POISONOUS AND HAZARDOUS SUBSTANCE which should be handled by trained staff only.

Handling Advice: Avoid repeated freezing and thawing.

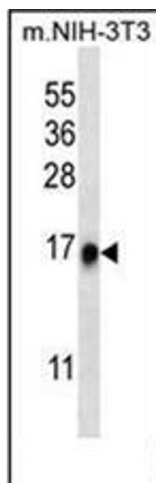
Storage: 4 °C/-20 °C

Storage Comment: Store the antibody undiluted at 2-8 °C for one month or (in aliquots) at -20 °C for longer.



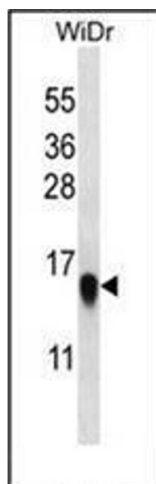
Immunohistochemistry (Paraffin-embedded Sections)

Image 1. Immunohistochemistry analysis in Formalin Fixed, Paraffin Embedded Human pancreas tissue using RPL35 Antibody (C-term) followed by peroxidase conjugation of the secondary antibody and DAB staining. This data demonstrates the use of RPL35 Antibody (C-term) for immunohistochemistry. Clinical relevance has not been evaluated.



Western Blotting

Image 2. Western blot analysis in NIH-3T3 cell line lysates (35 ug/lane) using RPL35 Antibody (C-term) Cat.-No. AP53717PU-N. This demonstrates the RPL35 antibody detected the RPL35 protein (arrow).



Western Blotting

Image 3. Western blot analysis in WiDr cell line lysates (35 ug/lane) using RPL35 Antibody (C-term) Cat.-No. AP53717PU-N. This demonstrates the RPL35 antibody detected the RPL35 protein (arrow).