

Datasheet for ABIN954596
anti-RPL36 antibody (N-Term)



[Go to Product page](#)

1 Image

Overview

Quantity:	0.4 mL
Target:	RPL36
Binding Specificity:	AA 21-50, N-Term
Reactivity:	Human
Host:	Rabbit
Clonality:	Polyclonal
Conjugate:	This RPL36 antibody is un-conjugated
Application:	Western Blotting (WB), Enzyme Immunoassay (EIA)

Product Details

Immunogen:	KLH conjugated synthetic peptide between 21~50 amino acids from the N-terminal region of Human RPL36 Genename: RPL36
Isotype:	Ig Fraction
Specificity:	Recognizes RPL36 (N-term).
Purification:	Protein A column followed by peptide Affinity purification

Target Details

Target:	RPL36
Alternative Name:	RPL36 (RPL36 Products)
Background:	Ribosomes, the organelles that catalyze protein synthesis, consist of a small 40S subunit and a

Target Details

large 60S subunit. Together these subunits are composed of 4 RNA species and approximately 80 structurally distinct proteins. This gene encodes a ribosomal protein that is a component of the 60S subunit. The protein belongs to the L36E family of ribosomal proteins. It is located in the cytoplasm. Transcript variants derived from alternative splicing exist, they encode the same protein. As is typical for genes encoding ribosomal proteins, there are multiple processed pseudogenes of this gene dispersed through the genome. [provided by RefSeq].Synonyms: 60S ribosomal protein L36

Gene ID: 25873

NCBI Accession: [NP_378669](#)

Pathways: [SARS-CoV-2 Protein Interactome](#)

Application Details

Application Notes: Optimal working dilution should be determined by the investigator.

Restrictions: For Research Use only

Handling

Format: Liquid

Concentration: 0.25 mg/mL

Buffer: PBS with 0.09 % (W/V) Sodium Azide as preservative

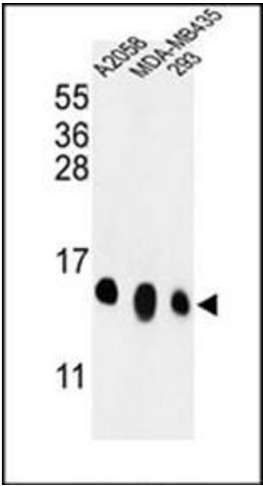
Preservative: Sodium azide

Precaution of Use: This product contains sodium azide: a POISONOUS AND HAZARDOUS SUBSTANCE which should be handled by trained staff only.

Handling Advice: Avoid repeated freezing and thawing.

Storage: 4 °C/-20 °C

Storage Comment: Store the antibody undiluted at 2-8 °C for one month or (in aliquots) at -20 °C for longer.



Western Blotting

Image 1. Western blot analysis in A2058, MDA-MB435, 293 cell line lysates (35 ug/lane) using RPL36 Antibody (N-term) Cat.-No. AP53718PU-N. RPL36 (arrow) was detected using the purified Pab.