

Datasheet for ABIN954604
anti-RPLP0 antibody (N-Term)



[Go to Product page](#)

1 Image

Overview

Quantity:	0.4 mL
Target:	RPLP0
Binding Specificity:	AA 1-30, N-Term
Reactivity:	Human
Host:	Rabbit
Clonality:	Polyclonal
Conjugate:	This RPLP0 antibody is un-conjugated
Application:	Western Blotting (WB), Enzyme Immunoassay (EIA)

Product Details

Immunogen:	KLH conjugated synthetic peptide between 1-30 amino acids from the N-terminal region of Human RPLP0 Genename: RPLP0
Isotype:	Ig Fraction
Specificity:	Recognizes RPLP0 (N-term).
Purification:	Protein A column followed by peptide Affinity purification

Target Details

Target:	RPLP0
Alternative Name:	RPLP0 (RPLP0 Products)
Background:	RPLP0 was catalyze synthesis by ribosomes, consisting of a small 40S subunit and a large 60S

Target Details

subunit. Together these subunits are composed of 4 RNA species and approximately 80 structurally distinct proteins. This peotein encodes a ribosomal protein that is a component of the 60S subunit. The protein, which is the functional equivalent of the E. coli L10 ribosomal protein, belongs to the L10P family of ribosomal proteins. It is a neutral phosphoprotein with a C-terminal end that is nearly identical to the C-terminal ends of the acidic ribosomal phosphoproteins P1 and P2. This protein can interact with P1 and P2 to form a pentameric complex consisting of P1 and P2 dimers, and a P0 monomer. The protein is located in the cytoplasm.Synonyms: 60S acidic ribosomal protein P0, 60S ribosomal protein L10E

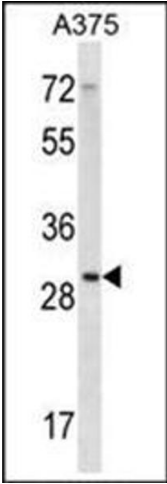
Gene ID:	6175
NCBI Accession:	NP_000993

Application Details

Application Notes:	Optimal working dilution should be determined by the investigator.
Restrictions:	For Research Use only

Handling

Format:	Liquid
Concentration:	0.25 mg/mL
Buffer:	PBS with 0.09 % (W/V) Sodium Azide as preservative
Preservative:	Sodium azide
Precaution of Use:	This product contains sodium azide: a POISONOUS AND HAZARDOUS SUBSTANCE which should be handled by trained staff only.
Handling Advice:	Avoid repeated freezing and thawing.
Storage:	4 °C/-20 °C
Storage Comment:	Store the antibody undiluted at 2-8 °C for one month or (in aliquots) at -20 °C for longer.



Western Blotting

Image 1. Western blot analysis of RPLP0 Antibody (N-term) Cat.-No AP53726PU-N in A375 cell line lysates (35ug/lane). This demonstrates the RPLP0 antibody detected the RPLP0 protein (arrow).