

Datasheet for ABIN954605
anti-RPLP2 antibody (N-Term)



[Go to Product page](#)

1 Image

Overview

Quantity:	0.4 mL
Target:	RPLP2
Binding Specificity:	AA 20-49, N-Term
Reactivity:	Human
Host:	Rabbit
Clonality:	Polyclonal
Application:	Western Blotting (WB), Enzyme Immunoassay (EIA)

Product Details

Immunogen:	KLH conjugated synthetic peptide between 20~49 amino acids from the N-terminal region of Human RPLP2. Genename: RPLP2
Isotype:	Ig Fraction
Specificity:	Recognizes Human RPLP2 (N-Term).
Purification:	Protein A column followed by peptide Affinity purification

Target Details

Target:	RPLP2
Alternative Name:	RPLP2 (RPLP2 Products)
Background:	RPLP2 consist of a small 40S subunit and a large 60S subunit. Together these subunits are composed of 4 RNA species and approximately 80 structurally distinct proteins. This protein encodes a ribosomal phosphoprotein that is a component of the 60S subunit. The protein,

Target Details

which is a functional equivalent of the E. coli L7/L12 ribosomal protein, belongs to the L12P family of ribosomal proteins. It plays an important role in the elongation step of protein synthesis. Unlike most ribosomal proteins, which are basic, the encoded protein is acidic. Its C-terminal end is nearly identical to the C-terminal ends of the ribosomal phosphoproteins P0 and P1. The P2 protein can interact with P0 and P1 to form a pentameric complex consisting of P1 and P2 dimers, and a P0 monomer. The protein is located in the cytoplasm. As is typical for genes encoding ribosomal proteins, there are multiple processed pseudogenes of this gene dispersed through the genome. Synonyms: 60S acidic ribosomal protein P2, D11S2243E, NY-REN-44, RPP2, Renal carcinoma antigen NY-REN-44

Molecular Weight:	11665 Da
-------------------	----------

Gene ID:	6181
----------	------

NCBI Accession:	NP_000995
-----------------	---------------------------

Application Details

Application Notes:	Optimal working dilution should be determined by the investigator.
--------------------	--

Restrictions:	For Research Use only
---------------	-----------------------

Handling

Format:	Liquid
---------	--------

Concentration:	0.25 mg/mL
----------------	------------

Buffer:	PBS containing 0.09 % (W/V) Sodium Azide as preservative
---------	--

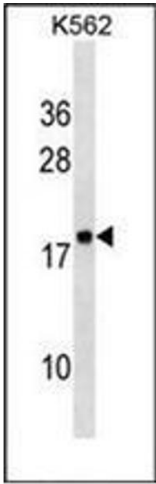
Preservative:	Sodium azide
---------------	--------------

Precaution of Use:	This product contains sodium azide: a POISONOUS AND HAZARDOUS SUBSTANCE which should be handled by trained staff only.
--------------------	--

Handling Advice:	Avoid repeated freezing and thawing.
------------------	--------------------------------------

Storage:	4 °C/-20 °C
----------	-------------

Storage Comment:	Store undiluted at 2-8 °C for one month or (in aliquots) at -20 °C for longer.
------------------	--



Western Blotting

Image 1. Western blot analysis of RPLP2 Antibody (N-Term) in K562 cell line lysates (35ug/lane). This demonstrates the RPLP2 antibody detected the RPLP2 protein (arrow).