

Datasheet for ABIN954607  
**anti-RPP38 antibody (C-Term)**



[Go to Product page](#)

1 Image

## Overview

Quantity:	0.4 mL
Target:	RPP38
Binding Specificity:	AA 255-283, C-Term
Reactivity:	Human
Host:	Rabbit
Clonality:	Polyclonal
Conjugate:	This RPP38 antibody is un-conjugated
Application:	Western Blotting (WB), Enzyme Immunoassay (EIA)

## Product Details

Immunogen:	KLH conjugated synthetic peptide between 255-283 amino acids from the C-terminal region of Human RPP38 Genename: RPP38
Isotype:	Ig Fraction
Specificity:	Recognizes RPP38 (C-term).
Purification:	Protein A column followed by peptide Affinity purification

## Target Details

Target:	RPP38
Alternative Name:	RPP38 ( <a href="#">RPP38 Products</a> )
Background:	Component of ribonuclease P, a protein complex that generates mature tRNA molecules by

## Target Details

cleaving their 5'-ends. RPP38 may associate transiently with RNase P RNA as a factor involved in the transport of H1 RNA to the putative site of its assembly in the cell, the nucleolus.Synonyms: RNaseP protein p38, Ribonuclease P protein subunit p3

Gene ID: 10557

NCBI Accession: [NP\\_001091059](#)

## Application Details

Application Notes: Optimal working dilution should be determined by the investigator.

Restrictions: For Research Use only

## Handling

Format: Liquid

Concentration: 0.25 mg/mL

Buffer: PBS with 0.09 % (W/V) Sodium Azide as preservative

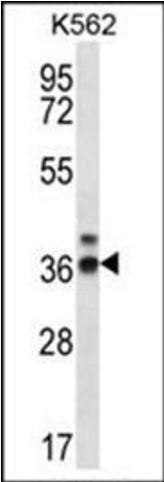
Preservative: Sodium azide

Precaution of Use: This product contains sodium azide: a POISONOUS AND HAZARDOUS SUBSTANCE which should be handled by trained staff only.

Handling Advice: Avoid repeated freezing and thawing.

Storage: 4 °C/-20 °C

Storage Comment: Store the antibody undiluted at 2-8 °C for one month or (in aliquots) at -20 °C for longer.



**Western Blotting**

**Image 1.** Western blot analysis of RPP38 Antibody (C-term) Cat.-No AP53729PU-N in K562 cell line lysates (35ug/lane). This demonstrates the RPP38 antibody detected the RPP38 protein (arrow).