

Datasheet for ABIN954608  
**anti-RPRD1B antibody (C-Term)**[Go to Product page](#)

## 2 Images

## Overview

Quantity:	0.4 mL
Target:	RPRD1B
Binding Specificity:	AA 261-290, C-Term
Reactivity:	Human
Host:	Rabbit
Clonality:	Polyclonal
Application:	Western Blotting (WB), Flow Cytometry (FACS), Enzyme Immunoassay (EIA)

## Product Details

Immunogen:	KLH conjugated synthetic peptide between 261~290 amino acids from the C-terminal region of Human RPR1B.
Isotype:	Ig Fraction
Specificity:	Recognizes RPR1B (C-term).
Purification:	Protein A column followed by peptide Affinity purification

## Target Details

Target:	RPRD1B
Alternative Name:	RPRD1B ( <a href="#">RPRD1B Products</a> )
Background:	Synonyms: C20orf77, CREPT, Cell cycle-related and expression-elevated protein in tumor, Regulation of nuclear pre-mRNA domain-containing protein 1B, chromosome 20 open reading frame 77

## Target Details

Gene ID:	58490
NCBI Accession:	<a href="#">NP_067038</a>

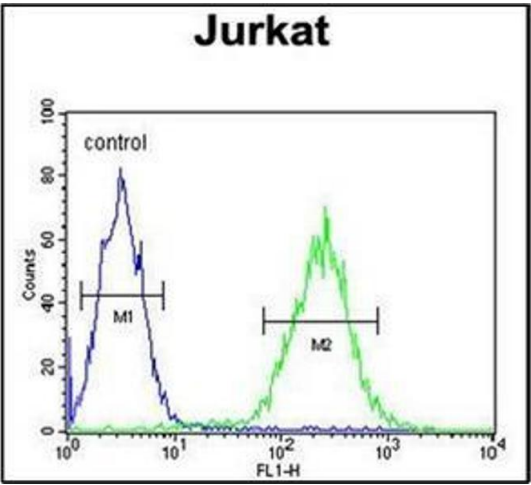
## Application Details

Application Notes:	Optimal working dilution should be determined by the investigator.
Restrictions:	For Research Use only

## Handling

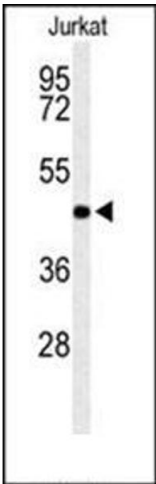
Format:	Liquid
Concentration:	0.25 mg/mL
Buffer:	PBS with 0.09 % (W/V) Sodium Azide as preservative
Preservative:	Sodium azide
Precaution of Use:	This product contains sodium azide: a POISONOUS AND HAZARDOUS SUBSTANCE which should be handled by trained staff only.
Handling Advice:	Avoid repeated freezing and thawing.
Storage:	4 °C/-20 °C
Storage Comment:	Store the antibody undiluted at 2-8 °C for one month or (in aliquots) at -20 °C for longer.

## Images



### Flow Cytometry

**Image 1.** Flow Cytometric analysis of Jurkat cells using RPR1B Antibody (C-term) Cat.-No AP53730PU-N (right histogram) compared to a negative control cell (left histogram). FITC-conjugated Goat-anti-Rabbit secondary antibodies were used for the analysis.



Western Blotting

**Image 2.** Western blot analysis in Jurkat cell line lysates (35 ug/lane) using RPR1B Antibody (C-term) Cat.-No. AP53730PU-N. RPR1B (arrow) was detected using the purified Pab.