

Datasheet for ABIN954619

anti-RPS4Y1 antibody (Middle Region)**2** Images[Go to Product page](#)

Overview

Quantity:	0.4 mL
Target:	RPS4Y1
Binding Specificity:	AA 83-113, Middle Region
Reactivity:	Human
Host:	Rabbit
Clonality:	Polyclonal
Conjugate:	This RPS4Y1 antibody is un-conjugated
Application:	Western Blotting (WB), Immunohistochemistry (Paraffin-embedded Sections) (IHC (p)), Enzyme Immunoassay (EIA)

Product Details

Immunogen:	KLH conjugated synthetic peptide between 83-113 amino acids from the Central region of Human RPS4Y1. Genename: RPS4Y1
Isotype:	Ig Fraction
Specificity:	Recognizes RPS4Y1 (Center).
Purification:	Protein A column followed by peptide Affinity purification

Target Details

Target:	RPS4Y1
Alternative Name:	RPS4Y1 / RPS4Y (RPS4Y1 Products)

Target Details

Background: Cytoplasmic ribosomes, organelles that catalyze protein synthesis, consist of a small 40S subunit and a large 60S subunit. Together these subunits are composed of 4 RNA species and approximately 80 structurally distinct proteins. This gene encodes ribosomal protein S4, a component of the 40S subunit. Ribosomal protein S4 is the only ribosomal protein known to be encoded by more than one gene, namely this gene and ribosomal protein S4, X-linked (RPS4X). The 2 isoforms encoded by these genes are not identical, but are functionally equivalent. Ribosomal protein S4 belongs to the S4E family of ribosomal proteins. It has been suggested that haploinsufficiency of the ribosomal protein S4 genes plays a role in Turner syndrome, however, this hypothesis is controversial. As is typical for genes encoding ribosomal proteins, there are multiple processed pseudogenes of this gene dispersed through the genome. Synonyms: 40S ribosomal protein S4 Y isoform 1, PRO2646

Gene ID: 6192

NCBI Accession: [NP_000999](#)

Application Details

Application Notes: Optimal working dilution should be determined by the investigator.

Restrictions: For Research Use only

Handling

Format: Liquid

Concentration: 0.25 mg/mL

Buffer: PBS with 0.09 % (W/V) Sodium Azide as preservative

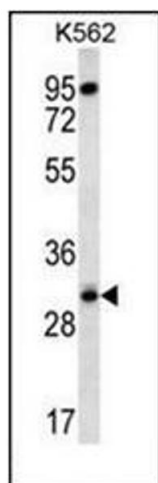
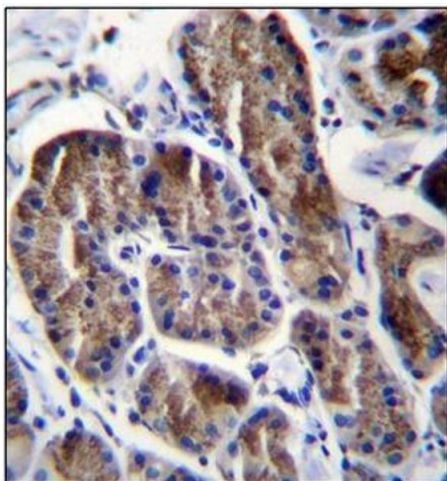
Preservative: Sodium azide

Precaution of Use: This product contains sodium azide: a POISONOUS AND HAZARDOUS SUBSTANCE which should be handled by trained staff only.

Handling Advice: Avoid repeated freezing and thawing.

Storage: 4 °C/-20 °C

Storage Comment: Store the antibody undiluted at 2-8 °C for one month or (in aliquots) at -20 °C for longer.



Immunohistochemistry (Paraffin-embedded Sections)

Image 1. Immunohistochemistry analysis in Formalin Fixed, Paraffin Embedded Human stomach tissue using RPS4Y1 Antibody (Center) followed by peroxidase conjugation of the secondary antibody and DAB staining. This data demonstrates the use of RPS4Y1 Antibody (Center) for immunohistochemistry. Clinical relevance has not been evaluated.

Western Blotting

Image 2. Western blot analysis in K562 cell line lysates (35 ug/lane) using RPS4Y1 Antibody (Center) Cat.-No AP53741PU-N. This demonstrates the RPS4Y1 antibody detected the RPS4Y1 protein (arrow).