

Datasheet for ABIN954620
anti-RPS6 antibody (AA 227-257)



[Go to Product page](#)

5 Images

Overview

Quantity:	0.4 mL
Target:	RPS6
Binding Specificity:	AA 227-257
Reactivity:	Human, Mouse
Host:	Rabbit
Clonality:	Polyclonal
Application:	Western Blotting (WB), Immunohistochemistry (Paraffin-embedded Sections) (IHC (p)), Flow Cytometry (FACS), Enzyme Immunoassay (EIA)

Product Details

Immunogen:	KLH conjugated synthetic peptide between 227-257 amino acids from Human RPS6. Genename: RPS6
Isotype:	Ig Fraction
Specificity:	Recognizes RPS6 (Ser240/244).
Purification:	Protein A column followed by peptide Affinity purification

Target Details

Target:	RPS6
Alternative Name:	RPS6 (RPS6 Products)
Background:	Ribosomes, the organelles that catalyze protein synthesis, consist of a small 40S subunit and a large 60S subunit. Together these subunits are composed of 4 RNA species and approximately

Target Details

80 structurally distinct proteins. This gene encodes a cytoplasmic ribosomal protein that is a component of the 40S subunit. The protein belongs to the S6E family of ribosomal proteins. It is the major substrate of protein kinases in the ribosome, with subsets of five C-terminal serine residues phosphorylated by different protein kinases. Phosphorylation is induced by a wide range of stimuli, including growth factors, tumor-promoting agents, and mitogens. Dephosphorylation occurs at growth arrest. The protein may contribute to the control of cell growth and proliferation through the selective translation of particular classes of mRNA. As is typical for genes encoding ribosomal proteins, there are multiple processed pseudogenes of this gene dispersed through the genome. Synonyms: 40S ribosomal protein S6, Phosphoprotein NP33

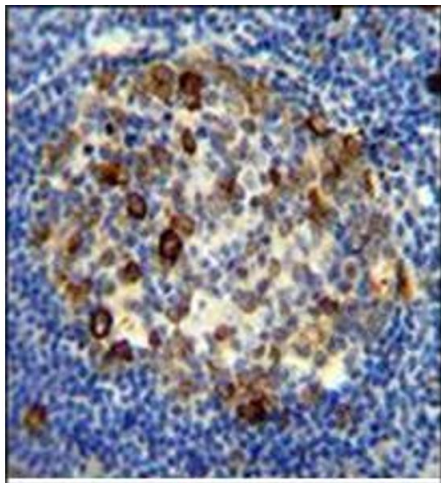
Gene ID:	6194
NCBI Accession:	NP_001001
Pathways:	Carbohydrate Homeostasis , Ribonucleoprotein Complex Subunit Organization , Ribosome Assembly

Application Details

Application Notes:	Optimal working dilution should be determined by the investigator.
Restrictions:	For Research Use only

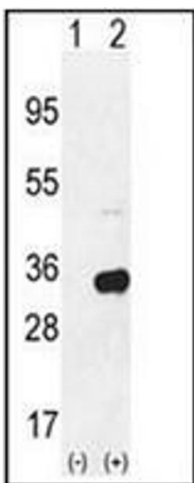
Handling

Format:	Liquid
Concentration:	0.25 mg/mL
Buffer:	PBS with 0.09 % (W/V) Sodium Azide as preservative
Preservative:	Sodium azide
Precaution of Use:	This product contains sodium azide: a POISONOUS AND HAZARDOUS SUBSTANCE which should be handled by trained staff only.
Handling Advice:	Avoid repeated freezing and thawing.
Storage:	4 °C/-20 °C
Storage Comment:	Store the antibody undiluted at 2-8 °C for one month or (in aliquots) at -20 °C for longer.



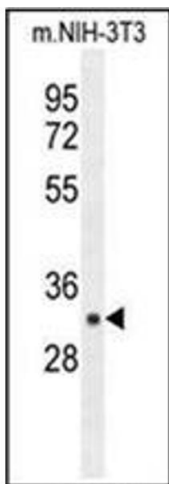
Immunohistochemistry (Paraffin-embedded Sections)

Image 1. Immunohistochemistry analysis in Formalin Fixed, Paraffin Embedded Human tonsil tissue using RPS6 antibody (Ser240/244) followed by peroxidase conjugation of the secondary antibody and DAB staining. This data demonstrates the use of the RPS6 antibody (Ser240/244) for immunohistochemistry. Clinical relevance has not been evaluated.



Western Blotting

Image 2. Western blot analysis of RPS6 (arrow) using RPS6 Antibody(Ser240/244) Cat.-No AP53742PU-N. 293 cell lysates (2 ug/lane) either non-transfected (Lane 1) or transiently transfected with the RPS6 gene (Lane 2).



Western Blotting

Image 3. Western blot analysis of RPS6 in mouse NIH-3T3 cell line lysates (35ug/lane) using RPS6 Antibody(Ser240/244) Cat.-No AP53742PU-N. This demonstrates the RPS6 antibody detected the RPS6 protein (arrow).

Please check the [product details page](#) for more images. Overall 5 images are available for ABIN954620.