

Datasheet for ABIN954626
anti-RPS6KC1 antibody (N-Term)

2 Images

[Go to Product page](#)

Overview

Quantity:	0.4 mL
Target:	RPS6KC1
Binding Specificity:	AA 19-47, N-Term
Reactivity:	Mouse, Human
Host:	Rabbit
Clonality:	Polyclonal
Conjugate:	This RPS6KC1 antibody is un-conjugated
Application:	Western Blotting (WB), Immunohistochemistry (Paraffin-embedded Sections) (IHC (p)), Enzyme Immunoassay (EIA)

Product Details

Immunogen:	KLH conjugated synthetic peptide between 19-47 amino acids from the N-terminal region of Human RPS6KC1. Genename: RPS6KC1
Isotype:	Ig Fraction
Specificity:	Recognizes RPS6KC1 (N-term).
Purification:	Protein A column followed by peptide Affinity purification

Target Details

Target:	RPS6KC1
Alternative Name:	RPS6KC1 / RPK118 (RPS6KC1 Products)

Target Details

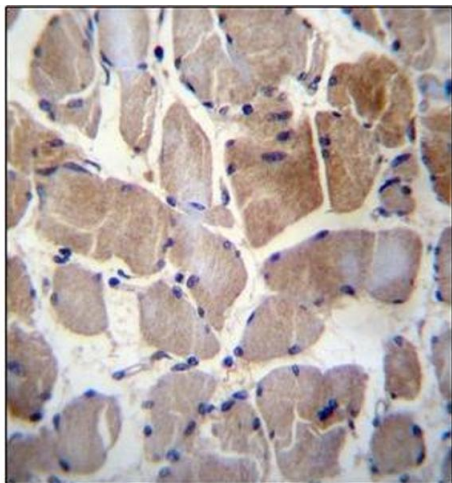
Background:	RPS6KC1 shows homology to the S6 kinase family of serine/threonine kinases. It is a sphingosine kinase-1 (SPHK1)-binding protein that may be involved in transmitting sphingosine 1 phosphate (SPP)-mediated signaling into the cell. Cellular localization: Cytoplasm. Membrane. Also found in some small dot-like or ring-shaped early endosome structures.Synonyms: 52 kDa ribosomal protein S6 kinase, Ribosomal S6 kinase-like protein with two PSK domains 118 kDa protein, Ribosomal protein S6 kinase delta-1, S6K-delta-1, SPHK1-binding protein
Gene ID:	26750
NCBI Accession:	NP_001129610

Application Details

Application Notes:	Optimal working dilution should be determined by the investigator.
Restrictions:	For Research Use only

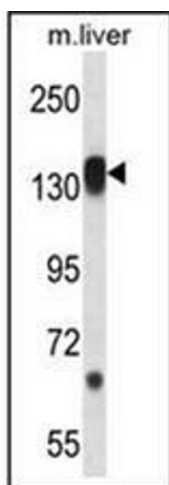
Handling

Format:	Liquid
Concentration:	0.25 mg/mL
Buffer:	PBS with 0.09 % (W/V) Sodium Azide as preservative
Preservative:	Sodium azide
Precaution of Use:	This product contains sodium azide: a POISONOUS AND HAZARDOUS SUBSTANCE which should be handled by trained staff only.
Handling Advice:	Avoid repeated freezing and thawing.
Storage:	4 °C/-20 °C
Storage Comment:	Store the antibody undiluted at 2-8 °C for one month or (in aliquots) at -20 °C for longer.



Immunohistochemistry (Paraffin-embedded Sections)

Image 1. Immunohistochemistry analysis in Formalin Fixed, Paraffin Embedded Human skeletal muscle using RPS6KC1 Antibody (N-term) followed by peroxidase conjugation of the secondary antibody and DAB staining. This data demonstrates the use of RPS6KC1 Antibody (N-term) for immunohistochemistry. Clinical relevance has not been evaluated.



Western Blotting

Image 2. Western blot analysis in Mouse liver tissue lysates (35ug/lane) using RPS6KC1 Antibody (N-term) Cat.-No AP53746PU-N. This demonstrates the RPS6KC1 antibody detected the RPS6KC1 protein (arrow).