

Datasheet for ABIN954628  
**anti-GTR2 antibody (Middle Region)**

## 2 Images

[Go to Product page](#)

## Overview

Quantity:	0.4 mL
Target:	GTR2 (RRAGC)
Binding Specificity:	AA 168-198, Middle Region
Reactivity:	Human
Host:	Rabbit
Clonality:	Polyclonal
Conjugate:	This GTR2 antibody is un-conjugated
Application:	Western Blotting (WB), Immunohistochemistry (Paraffin-embedded Sections) (IHC (p)), Enzyme Immunoassay (EIA)

## Product Details

Immunogen:	KLH conjugated synthetic peptide between 168-198 amino acids from the Central region of Human RRAGC Genename: RRAGC
Isotype:	Ig Fraction
Specificity:	Recognizes RRAGC (Center).
Purification:	Protein A column followed by peptide Affinity purification

## Target Details

Target:	GTR2 (RRAGC)
Alternative Name:	RRAGC / Rag C ( <a href="#">RRAGC Products</a> )

## Target Details

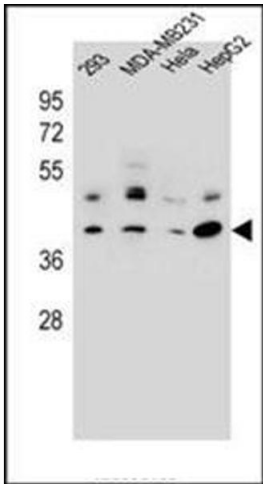
Background:	RRAGC is a monomeric guanine nucleotide-binding protein, or G protein. By binding GTP or GDP, small G proteins act as molecular switches in numerous cell processes and signaling pathways.Synonyms: GTPase-interacting protein 2, GTR2, RagC, Ras-related GTP-binding protein C, TIB929
Gene ID:	64121
NCBI Accession:	<a href="#">NP_071440</a>
Pathways:	<a href="#">Autophagy</a>

## Application Details

Application Notes:	Optimal working dilution should be determined by the investigator.
Restrictions:	For Research Use only

## Handling

Format:	Liquid
Concentration:	0.25 mg/mL
Buffer:	PBS with 0.09 % (W/V) Sodium Azide as preservative
Preservative:	Sodium azide
Precaution of Use:	This product contains sodium azide: a POISONOUS AND HAZARDOUS SUBSTANCE which should be handled by trained staff only.
Handling Advice:	Avoid repeated freezing and thawing.
Storage:	4 °C/-20 °C
Storage Comment:	Store the antibody undiluted at 2-8 °C for one month or (in aliquots) at -20 °C for longer.



**Immunohistochemistry (Paraffin-embedded Sections)**

**Image 1.** Immunohistochemistry analysis in Formalin Fixed and Paraffin Embedded Human uterus tissue using RRAGC Antibody (Center) followed by peroxidase conjugation of the secondary antibody and DAB staining. This data demonstrates the use of RRAGC Antibody (Center) for immunohistochemistry. Clinical relevance has not been evaluated.

**Western Blotting**

**Image 2.** Western blot analysis in 293, MDA-MB231, HeLa, HepG2 cell line lysates (35 mg/lane) using RRAGC Antibody (Center) Cat.-No AP53748PU-N. This demonstrates the RRAGC antibody detected the RRAGC protein (arrow).