



Datasheet for ABIN954631
anti-Peropsin antibody (C-Term)



[Go to Product page](#)

1 Image

Overview

Quantity:	0.4 mL
Target:	Peropsin (RRH)
Binding Specificity:	AA 212-240, C-Term
Reactivity:	Human
Host:	Rabbit
Clonality:	Polyclonal
Conjugate:	This Peropsin antibody is un-conjugated
Application:	Western Blotting (WB), Enzyme Immunoassay (EIA)

Product Details

Immunogen:	KLH conjugated synthetic peptide between 212-240 amino acids from the C-terminal region of Human RRH Genename: RRH
Isotype:	Ig Fraction
Specificity:	Recognizes RRH C-term).
Purification:	Protein A column followed by peptide Affinity purification

Target Details

Target:	Peropsin (RRH)
Alternative Name:	RRH (RRH Products)
Background:	Peropsin is a visual pigment-like protein identified following large-scale sequencing of cDNAs

Target Details

derived from human ocular tissues. Peropsin mRNA is found in the retinal pigment epithelium (RPE) of the eye. Peropsin immunoreactivity, localizes the protein to the apical face of the RPE, and most prominently to the microvilli that surround the photoreceptor outer segments. It is thought that Peropsin may play a role in RPE physiology either in light detection as well as monitoring the concentration of retinoids (or other photoreceptor-derived compounds). It may play a role in retinal pigment epithelium physiology either by detecting light directly or by monitoring the concentration of retinoids or other photoreceptor-derived compounds. Synonyms: Peropsin, Visual pigment-like receptor peropsin

Gene ID: 10692

NCBI Accession: [NP_006574](#)

Application Details

Application Notes: Optimal working dilution should be determined by the investigator.

Restrictions: For Research Use only

Handling

Format: Liquid

Concentration: 0.25 mg/mL

Buffer: PBS with 0.09 % (W/V) Sodium Azide as preservative

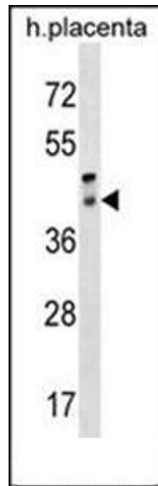
Preservative: Sodium azide

Precaution of Use: This product contains sodium azide: a POISONOUS AND HAZARDOUS SUBSTANCE which should be handled by trained staff only.

Handling Advice: Avoid repeated freezing and thawing.

Storage: 4 °C/-20 °C

Storage Comment: Store the antibody undiluted at 2-8 °C for one month or (in aliquots) at -20 °C for longer.



Western Blotting

Image 1. Western blot analysis in Human placenta tissue lysates (35 µg/lane) using RRH Antibody (C-term) Cat.-No AP53751PU-N. This demonstrates the RRH antibody detected the RRH protein (arrow).