

Datasheet for ABIN954633

anti-RSBN1 antibody (N-Term)**2** Images[Go to Product page](#)

Overview

Quantity:	0.4 mL
Target:	RSBN1
Binding Specificity:	AA 10-38, N-Term
Reactivity:	Human
Host:	Rabbit
Clonality:	Polyclonal
Conjugate:	This RSBN1 antibody is un-conjugated
Application:	Western Blotting (WB), Immunohistochemistry (Paraffin-embedded Sections) (IHC (p)), Enzyme Immunoassay (EIA)

Product Details

Immunogen:	KLH conjugated synthetic peptide between 10-38 amino acids from the N-terminal region of Human RSBN1 Genename: RSBN1
Isotype:	Ig Fraction
Specificity:	Recognizes RSBN1 (N-term).
Purification:	Protein A column followed by peptide Affinity purification

Target Details

Target:	RSBN1
Alternative Name:	RSBN1 (RSBN1 Products)

Target Details

Background: Synonyms: Round spermatid basic protein 1

Gene ID: 54665

NCBI Accession: [NP_060834](#)

Application Details

Application Notes: Optimal working dilution should be determined by the investigator.

Restrictions: For Research Use only

Handling

Format: Liquid

Concentration: 0.25 mg/mL

Buffer: PBS with 0.09 % (W/V) Sodium Azide as preservative

Preservative: Sodium azide

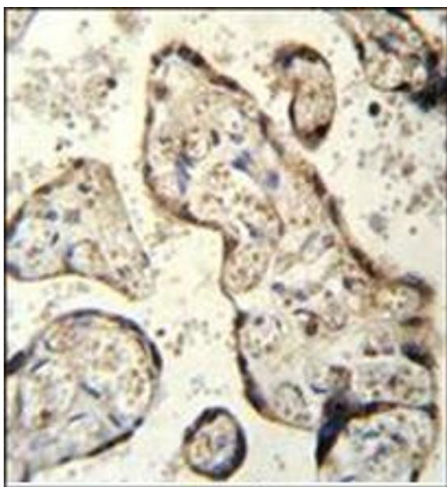
Precaution of Use: This product contains sodium azide: a POISONOUS AND HAZARDOUS SUBSTANCE which should be handled by trained staff only.

Handling Advice: Avoid repeated freezing and thawing.

Storage: 4 °C/-20 °C

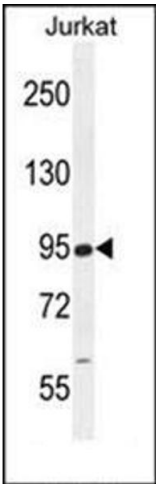
Storage Comment: Store the antibody undiluted at 2-8 °C for one month or (in aliquots) at -20 °C for longer.

Images



Immunohistochemistry (Paraffin-embedded Sections)

Image 1. Immunohistochemistry analysis in Formalin Fixed and Paraffin Embedded human placenta tissue using RSBN1 Antibody (N-term) followed by peroxidase conjugation of the secondary antibody and DAB staining. This data demonstrates the use of RSBN1 Antibody (N-term) for immunohistochemistry. Clinical relevance has not been evaluated.



Western Blotting

Image 2. Western blot analysis in Jurkat cell line lysates (35 µg/lane) using RSBN1 Antibody (N-term) Cat.-No AP53753PU-N. This demonstrates the RSBN1 antibody detected the RSBN1 protein (arrow).