



[Go to Product page](#)

Datasheet for ABIN954639
anti-RTL1 antibody (C-Term)

1 Image

Overview

Quantity:	0.4 mL
Target:	RTL1
Binding Specificity:	AA 1338-1367, C-Term
Reactivity:	Human
Host:	Rabbit
Clonality:	Polyclonal
Conjugate:	This RTL1 antibody is un-conjugated
Application:	Western Blotting (WB), Enzyme Immunoassay (EIA)

Product Details

Immunogen:	KLH conjugated synthetic peptide between 1338-1367 amino acids from the C-terminal region of Human RTL1 (XP_001716834.1, A6NKG5). Genename: RTL1
Isotype:	Ig Fraction
Purification:	Protein A column followed by peptide Affinity purification

Target Details

Target:	RTL1
Alternative Name:	RTL1 (RTL1 Products)
Background:	This gene is a retrotransposon-derived, paternally expressed imprinted gene that is highly expressed at the late fetal stage in both the fetus and placenta. It has an overlapping maternally expressed antisense transcript, which contains several microRNAs targeting the transcripts of

Target Details

this gene through an RNA interference (RNAi) mechanism. This gene is essential for maintenance of the fetal capillaries. Synonyms: MAR1, MART1, PEG11

Gene ID: 9606

Application Details

Application Notes: Optimal working dilution should be determined by the investigator.

Restrictions: For Research Use only

Handling

Format: Liquid

Concentration: 0.25 mg/mL

Buffer: PBS with 0.09 % (W/V) Sodium Azide as preservative

Preservative: Sodium azide

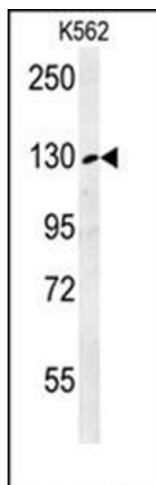
Precaution of Use: This product contains sodium azide: a POISONOUS AND HAZARDOUS SUBSTANCE which should be handled by trained staff only.

Handling Advice: Avoid repeated freezing and thawing.

Storage: 4 °C/-20 °C

Storage Comment: Store the antibody undiluted at 2-8 °C for one month or (in aliquots) at -20 °C for longer.

Images



Western Blotting

Image 1. Western blot analysis in K562 cell line lysates (35 µg/lane) using RTL1 Antibody (C-term) Cat.-No AP53764PU-N. This demonstrates the RTL1 antibody detected the RTL1 protein (arrow).