



[Go to Product page](#)

Datasheet for ABIN954640

anti-RTN4IP1 antibody (C-Term)

3 Images

Overview

Quantity:	0.4 mL
Target:	RTN4IP1
Binding Specificity:	AA 338-367, C-Term
Reactivity:	Human
Host:	Rabbit
Clonality:	Polyclonal
Conjugate:	This RTN4IP1 antibody is un-conjugated
Application:	Western Blotting (WB), Flow Cytometry (FACS), Immunohistochemistry (Paraffin-embedded Sections) (IHC (p)), Enzyme Immunoassay (EIA)

Product Details

Immunogen:	KLH conjugated synthetic peptide between 338-367 amino acids from the C-terminal region of Human RT4I1 Genename: RTN4IP1
Isotype:	Ig Fraction
Specificity:	Recognizes RT4I1 (C-term).
Purification:	Protein A column followed by peptide Affinity purification

Target Details

Target:	RTN4IP1
Alternative Name:	RTN4IP1 (RTN4IP1 Products)

Target Details

Background: This gene encodes a novel mitochondrial protein that interacts with reticulon 4, which is a potent inhibitor of regeneration following spinal cord injury. The interaction of reticulon 4 with mitochondrial proteins may provide insight into the mechanisms for reticulon-induced inhibition of neurite growth. Synonyms: NIMP, NOGO-interacting mitochondrial protein, Reticulon-4-interacting protein 1 mitochondrial

Gene ID: 84816

NCBI Accession: [NP_116119](#)

Application Details

Application Notes: Optimal working dilution should be determined by the investigator.

Restrictions: For Research Use only

Handling

Format: Liquid

Concentration: 0.25 mg/mL

Buffer: PBS with 0.09 % (W/V) Sodium Azide as preservative

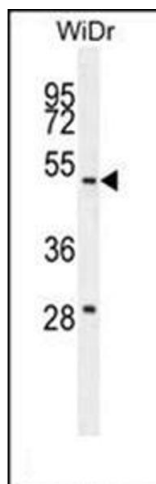
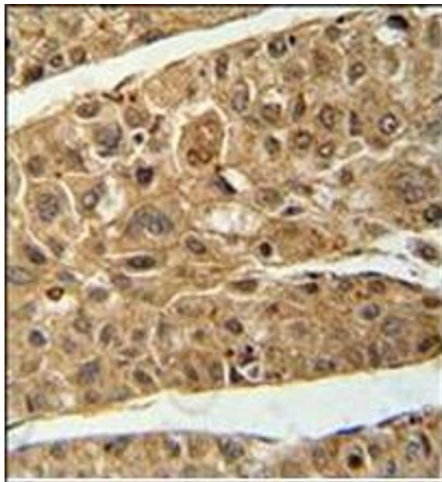
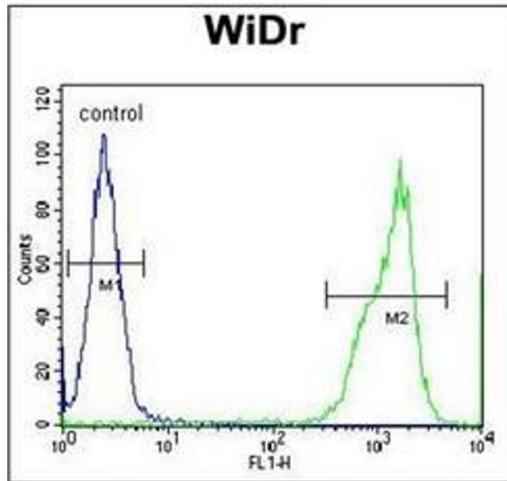
Preservative: Sodium azide

Precaution of Use: This product contains sodium azide: a POISONOUS AND HAZARDOUS SUBSTANCE which should be handled by trained staff only.

Handling Advice: Avoid repeated freezing and thawing.

Storage: 4 °C/-20 °C

Storage Comment: Store the antibody undiluted at 2-8 °C for one month or (in aliquots) at -20 °C for longer.



Flow Cytometry

Image 1. Flow Cytometry analysis of WiDr cells using RT4I1 Antibody (C-term) Cat.-No AP53761PU-N (Right histogram) compared to a negative control cell (Left histogram). FITC-conjugated Goat-anti-Rabbit secondary antibodies were used for the analysis.

Immunohistochemistry (Paraffin-embedded Sections)

Image 2. Immunohistochemistry analysis in Formalin Fixed and Paraffin Embedded Human hepatocarcinoma using RT4I1 Antibody (C-term) followed by peroxidase conjugation of the secondary antibody and DAB staining. This data demonstrates the use of the RT4I1 Antibody (C-term) for immunohistochemistry. Clinical relevance has not been evaluated.

Western Blotting

Image 3. Western blot analysis in WiDr cell line lysates (35 µg/lane) using RT4I1 Antibody (C-term) Cat.-No AP53761PU-N. This demonstrates the RT4I1 antibody detected the RT4I1 protein (arrow).