

Datasheet for ABIN954641  
**anti-RTP1 antibody (C-Term)**[Go to Product page](#)

## 1 Image

## Overview

Quantity:	0.4 mL
Target:	RTP1
Binding Specificity:	AA 168-197, C-Term
Reactivity:	Human, Mouse
Host:	Rabbit
Clonality:	Polyclonal
Conjugate:	This RTP1 antibody is un-conjugated
Application:	Western Blotting (WB), Enzyme Immunoassay (EIA)

## Product Details

Immunogen:	KLH conjugated synthetic peptide between 168-197 amino acids from the C-terminal region of Human RTP1 Genename: RTP1
Isotype:	Ig Fraction
Specificity:	Recognizes RTP1 (C-term).
Purification:	Protein A column followed by peptide Affinity purification

## Target Details

Target:	RTP1
Alternative Name:	RTP1 ( <a href="#">RTP1 Products</a> )
Background:	Specifically promotes functional cell surface expression of olfactory receptors, but not of other

## Target Details

GPCRs (By similarity).Synonyms: Receptor-transporting protein 1

Gene ID: 132112

NCBI Accession: [NP\\_714919](#)

## Application Details

Application Notes: Optimal working dilution should be determined by the investigator.

Restrictions: For Research Use only

## Handling

Format: Liquid

Concentration: 0.25 mg/mL

Buffer: PBS with 0.09 % (W/V) Sodium Azide as preservative

Preservative: Sodium azide

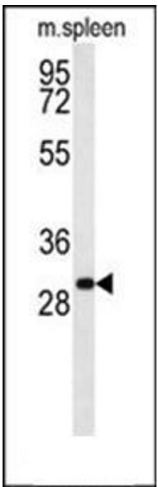
Precaution of Use: This product contains sodium azide: a POISONOUS AND HAZARDOUS SUBSTANCE which should be handled by trained staff only.

Handling Advice: Avoid repeated freezing and thawing.

Storage: 4 °C/-20 °C

Storage Comment: Store the antibody undiluted at 2-8 °C for one month or (in aliquots) at -20 °C for longer.

## Images



### Western Blotting

**Image 1.** Western blot analysis in mouse spleen tissue lysates (35 µg/lane) using RTP1 Antibody (C-term) Cat.-No AP53767PU-N. This demonstrates the RTP1 antibody detected the RTP1 protein (arrow).