

Datasheet for ABIN954645  
**anti-RUSC2 antibody (N-Term)**

## 2 Images

[Go to Product page](#)

## Overview

Quantity:	0.4 mL
Target:	RUSC2
Binding Specificity:	AA 315-344, N-Term
Reactivity:	Human
Host:	Rabbit
Clonality:	Polyclonal
Conjugate:	This RUSC2 antibody is un-conjugated
Application:	Western Blotting (WB), Immunohistochemistry (Paraffin-embedded Sections) (IHC (p)), Enzyme Immunoassay (EIA)

## Product Details

Immunogen:	KLH conjugated synthetic peptide between 315-344 amino acids from the N-terminal region of Human RUSC2 Genename: RUSC2
Isotype:	Ig Fraction
Specificity:	Recognizes RUSC2 (N-term).
Purification:	Protein A column followed by peptide Affinity purification

## Target Details

Target:	RUSC2
Alternative Name:	RUSC2 ( <a href="#">RUSC2 Products</a> )

## Target Details

Background:	RUSC2, also known as Iporin, shares with the related protein RUSC1 a common domain structure of RUN, leucine zipper and SH3 domain in addition to over 30 % amino acid identity. RUSC2 is a rab1-interacting protein that also interacts with GM130, another rab1-interacting protein. RUSC2 interacts with specific rab1 isoforms with different rab-binding specificity. It has been suggested that RUSC2 may function as a link between the targeting of ER derived vesicles triggered by the rab1 GTPase and a signaling pathway composed of proteins containing SH3 and/or poly-proline regions.Synonyms: Interacting protein of Rab1, Iporin, KIAA0375, RUN and SH3 domain-containing protein 2
-------------	---

Gene ID:	9853
----------	------

NCBI Accession:	<a href="#">NP_001129471</a>
-----------------	------------------------------

## Application Details

Application Notes:	Optimal working dilution should be determined by the investigator.
--------------------	--

Restrictions:	For Research Use only
---------------	-----------------------

## Handling

Format:	Liquid
---------	--------

Concentration:	0.25 mg/mL
----------------	------------

Buffer:	PBS with 0.09 % (W/V) Sodium Azide as preservative
---------	--

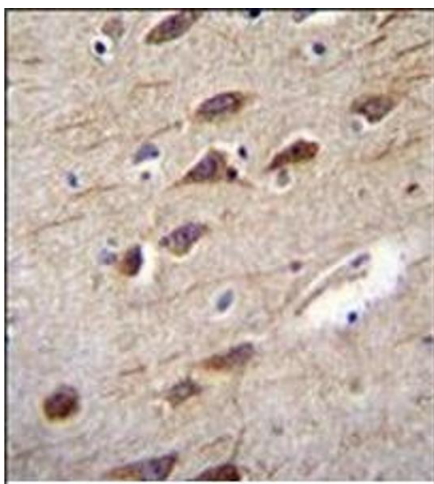
Preservative:	Sodium azide
---------------	--------------

Precaution of Use:	This product contains sodium azide: a POISONOUS AND HAZARDOUS SUBSTANCE which should be handled by trained staff only.
--------------------	--

Handling Advice:	Avoid repeated freezing and thawing.
------------------	--------------------------------------

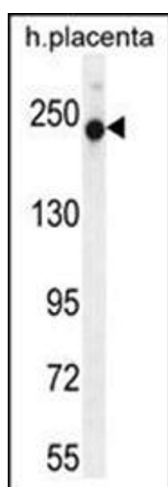
Storage:	4 °C/-20 °C
----------	-------------

Storage Comment:	Store the antibody undiluted at 2-8 °C for one month or (in aliquots) at -20 °C for longer.
------------------	---



#### Immunohistochemistry (Paraffin-embedded Sections)

**Image 1.** Immunohistochemistry analysis in Formalin Fixed, Paraffin embedded Human brain tissue stained with RUSC2 Antibody (N-term) followed by peroxidase conjugation of the secondary antibody and DAB staining. This data demonstrates the use of RUSC2 Antibody (N-term) for Immunohistochemistry. Clinical relevance has not been evaluated.



#### Western Blotting

**Image 2.** Western blot analysis in Human Placenta tissue lysates (35 ug/lane) using RUSC2 Antibody (N-term) Cat.-No. AP53771PU-N. This demonstrates the RUSC2 antibody detected the RUSC2 protein (arrow).