



Datasheet for ABIN954646  
**anti-SGSM2 antibody (C-Term)**



[Go to Product page](#)

2 Images

Overview

Quantity:	0.4 mL
Target:	SGSM2
Binding Specificity:	AA 962-992, C-Term
Reactivity:	Mouse, Human
Host:	Rabbit
Clonality:	Polyclonal
Conjugate:	This SGSM2 antibody is un-conjugated
Application:	Western Blotting (WB), Immunohistochemistry (Paraffin-embedded Sections) (IHC (p)), Enzyme Immunoassay (EIA)

Product Details

Immunogen:	KLH conjugated synthetic peptide between 962-992 amino acids from the C-terminal region of Human RUTBC1 (NP_001091979.1, NP_055668.2). Genename: SGSM2
Isotype:	Ig Fraction
Specificity:	Recognizes RUTBC1 (C-term).
Cross-Reactivity (Details):	Species reactivity (expected):Human. Species reactivity (tested):Mouse.
Purification:	Protein A column followed by peptide Affinity purification

Target Details

Target:	SGSM2
---------	-------

## Target Details

---

Alternative Name:	RUTBC1 ( <a href="#">SGSM2 Products</a> )
Background:	Synonyms: KIAA0397, RUN and TBC1 domain-containing protein 1, SGSM2, Small G protein signaling modulator 2
Gene ID:	9905
NCBI Accession:	<a href="#">NP_001091979</a>

## Application Details

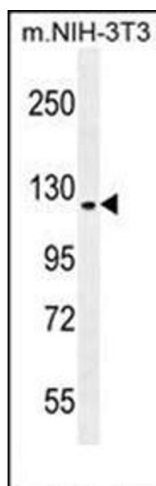
---

Application Notes:	Optimal working dilution should be determined by the investigator.
Restrictions:	For Research Use only

## Handling

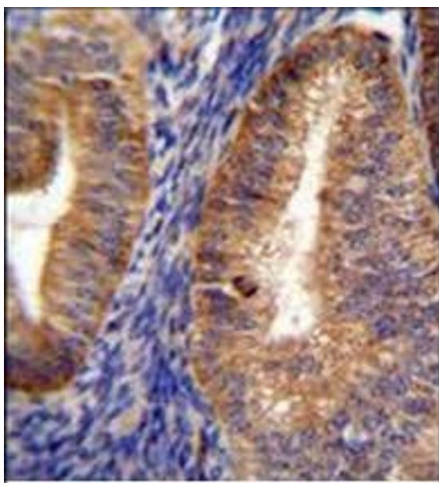
---

Format:	Liquid
Concentration:	0.25 mg/mL
Buffer:	PBS with 0.09 % (W/V) Sodium Azide as preservative
Preservative:	Sodium azide
Precaution of Use:	This product contains sodium azide: a POISONOUS AND HAZARDOUS SUBSTANCE which should be handled by trained staff only.
Handling Advice:	Avoid repeated freezing and thawing.
Storage:	4 °C/-20 °C
Storage Comment:	Store the antibody undiluted at 2-8 °C for one month or (in aliquots) at -20 °C for longer.



### Western Blotting

**Image 1.** Western blot analysis in mouse NIH-3T3 cell line lysates (35 ug/lane) using RUTBC1 Antibody (C-term) Cat.-No. AP53772PU-N. This demonstrates the RUTBC1 antibody detected the RUTBC1 protein (arrow).



### Immunohistochemistry (Paraffin-embedded Sections)

**Image 2.** Immunohistochemistry analysis in Formalin Fixed, Paraffin Embedded Human uterus tissue stained with RUTBC1 Antibody (C-term) followed by peroxidase conjugation of the secondary antibody and DAB staining. This data demonstrates the use of RUTBC1 Antibody (C-term) for immunohistochemistry. Clinical relevance has not been evaluated.