

Datasheet for ABIN954649
anti-RYBP antibody (N-Term)

2 Images



[Go to Product page](#)

Overview

Quantity:	0.4 mL
Target:	RYBP
Binding Specificity:	AA 1-30, N-Term
Reactivity:	Human
Host:	Rabbit
Clonality:	Polyclonal
Conjugate:	This RYBP antibody is un-conjugated
Application:	Western Blotting (WB), Enzyme Immunoassay (EIA)

Product Details

Immunogen:	KLH conjugated synthetic peptide between 1-30 amino acids from the N-terminal region of Human RYBP (NP_036366.3) Genename: RYBP
Isotype:	Ig Fraction
Specificity:	Recognizes RYBP (N-term).
Purification:	Protein A column followed by peptide Affinity purification

Target Details

Target:	RYBP
Alternative Name:	RYBP (RYBP Products)
Background:	RYBP may be implicated in the regulation of the transcription as a repressor of the

Target Details

transcriptional activity of E4TF1. In tumor cell lines, may induce apoptosis.Synonyms: AAP-1, APAP-1, Apoptin-associating protein 1, DED-associated factor, DEDAF, Death effector domain-associated factor, RING1 and YY1-binding protein, YEAF1, YY1 and E4TF1-associated factor 1

Gene ID: 23429

NCBI Accession: [NP_036366](#)

Application Details

Application Notes: Optimal working dilution should be determined by the investigator.

Restrictions: For Research Use only

Handling

Format: Liquid

Concentration: 0.25 mg/mL

Buffer: PBS with 0.09 % (W/V) Sodium Azide as preservative

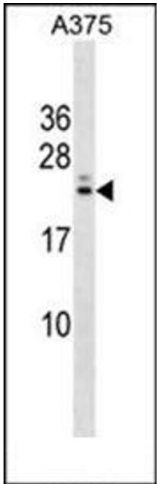
Preservative: Sodium azide

Precaution of Use: This product contains sodium azide: a POISONOUS AND HAZARDOUS SUBSTANCE which should be handled by trained staff only.

Handling Advice: Avoid repeated freezing and thawing.

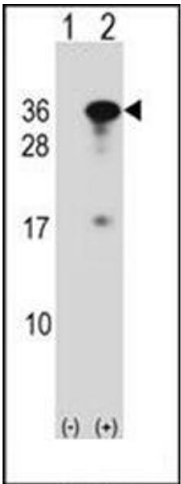
Storage: 4 °C/-20 °C

Storage Comment: Store the antibody undiluted at 2-8 °C for one month or (in aliquots) at -20 °C for longer.



Western Blotting

Image 1. Western blot analysis in A375 cell line lysates (35 ug/lane) using RYBP Antibody (N-term) Cat.-No. AP53775PU-N. This demonstrates the RYBP antibody detected the RYBP protein (arrow).



Western Blotting

Image 2. Western blot analysis of RYBP (arrow) using RYBP Antibody (N-term) Cat.-No AP53775PU-N. 293 cell lysates (2 µg/lane) either nontransfected (Lane 1) or transiently transfected (Lane 2) with the RYBP gene.