

Datasheet for ABIN954650  
**anti-S100A1 antibody (C-Term)**



[Go to Product page](#)

2 Images

## Overview

Quantity:	0.4 mL
Target:	S100A1
Binding Specificity:	AA 52-83, C-Term
Reactivity:	Human
Host:	Rabbit
Clonality:	Polyclonal
Conjugate:	This S100A1 antibody is un-conjugated
Application:	Western Blotting (WB), Immunohistochemistry (Paraffin-embedded Sections) (IHC (p)), Enzyme Immunoassay (EIA)

## Product Details

Immunogen:	KLH conjugated synthetic peptide between 52-83 amino acids from the C-terminal region of Human S100A1 Genename: S100A1
Isotype:	Ig Fraction
Specificity:	Recognizes S100A1 (C-term).
Purification:	Protein A column followed by peptide Affinity purification

## Target Details

Target:	S100A1
Alternative Name:	S100A1 ( <a href="#">S100A1 Products</a> )

## Target Details

**Background:** The protein encoded by this gene is a member of the S100 family of proteins containing 2 EF-hand calcium-binding motifs. S100 proteins are localized in the cytoplasm and/or nucleus of a wide range of cells, and involved in the regulation of a number of cellular processes such as cell cycle progression and differentiation. S100 genes include at least 13 members which are located as a cluster on chromosome 1q21. This protein may function in stimulation of Ca<sup>2+</sup>-induced Ca<sup>2+</sup> release, inhibition of microtubule assembly, and inhibition of protein kinase C-mediated phosphorylation. Reduced expression of this protein has been implicated in cardiomyopathies. Synonyms: S-100 protein alpha chain, S-100 protein subunit alpha, S100 alpha, S100 calcium-binding protein A1, S100-A1, S100A

**Gene ID:** 6271

**NCBI Accession:** [NP\\_006262](#)

**Pathways:** [Regulation of Muscle Cell Differentiation](#), [Toll-Like Receptors Cascades](#), [S100 Proteins](#)

## Application Details

**Application Notes:** Optimal working dilution should be determined by the investigator.

**Restrictions:** For Research Use only

## Handling

**Format:** Liquid

**Concentration:** 0.25 mg/mL

**Buffer:** PBS with 0.09 % (W/V) Sodium Azide as preservative

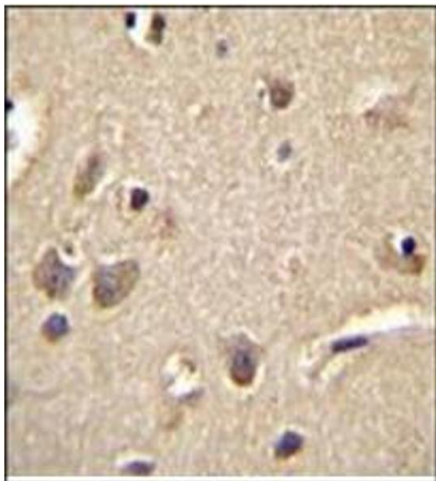
**Preservative:** Sodium azide

**Precaution of Use:** This product contains sodium azide: a POISONOUS AND HAZARDOUS SUBSTANCE which should be handled by trained staff only.

**Handling Advice:** Avoid repeated freezing and thawing.

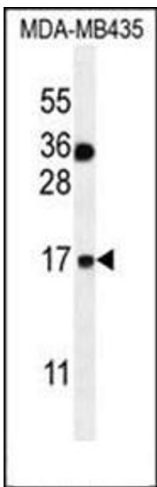
**Storage:** 4 °C/-20 °C

**Storage Comment:** Store the antibody undiluted at 2-8 °C for one month or (in aliquots) at -20 °C for longer.



**Immunohistochemistry (Paraffin-embedded Sections)**

**Image 1.** Immunohistochemistry analysis in Formalin Fixed, Paraffin Embedded Human brain tissue using S100A1 Antibody (C-term) followed by peroxidase conjugation of the secondary antibody and DAB staining. This data demonstrates the use of S100A1 Antibody (C-term) for immunohistochemistry. Clinical relevance has not been evaluated.



**Western Blotting**

**Image 2.** Western blot analysis in MDA-MB435 cell line lysates (35 ug/lane) using S100A1 Antibody (Center) Cat.-No AP53776PU-N. This demonstrates the S100A1 antibody detected the S100A1 protein (arrow).