

Datasheet for ABIN954651
anti-S100A10 antibody (Middle Region)



[Go to Product page](#)

3 Images

Overview

Quantity:	0.4 mL
Target:	S100A10
Binding Specificity:	AA 19-48, Middle Region
Reactivity:	Human
Host:	Rabbit
Clonality:	Polyclonal
Conjugate:	This S100A10 antibody is un-conjugated
Application:	Western Blotting (WB), Flow Cytometry (FACS), Immunohistochemistry (Paraffin-embedded Sections) (IHC (p)), Enzyme Immunoassay (EIA)

Product Details

Immunogen:	KLH conjugated synthetic peptide between 19~48 amino acids from the Center region of Human S100A10 Genename: S100A10
Isotype:	Ig Fraction
Specificity:	Recognizes S100A10 (Center).
Purification:	Protein A column followed by peptide Affinity purification

Target Details

Target:	S100A10
Alternative Name:	S100A10 (S100A10 Products)

Target Details

Background: The protein encoded by this gene is a member of the S100 family of proteins containing 2 EF-hand calcium-binding motifs. S100 proteins are localized in the cytoplasm and/or nucleus of a wide range of cells, and involved in the regulation of a number of cellular processes such as cell cycle progression and differentiation. Synonyms: ANX2LG, CAL1L, CLP11, Calpactin-1 light chain, Cellular ligand of annexin II, S100 calcium-binding protein A10, S100-A10

Gene ID: 6281

NCBI Accession: [NP_002957](#)

Pathways: [S100 Proteins](#)

Application Details

Application Notes: Optimal working dilution should be determined by the investigator.

Restrictions: For Research Use only

Handling

Format: Liquid

Concentration: 0.25 mg/mL

Buffer: PBS with 0.09 % (W/V) Sodium Azide as preservative

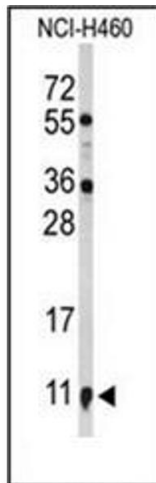
Preservative: Sodium azide

Precaution of Use: This product contains sodium azide: a POISONOUS AND HAZARDOUS SUBSTANCE which should be handled by trained staff only.

Handling Advice: Avoid repeated freezing and thawing.

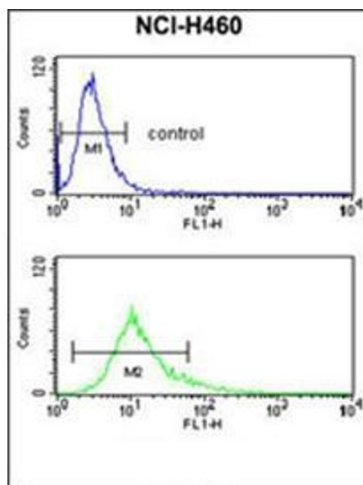
Storage: 4 °C/-20 °C

Storage Comment: Store the antibody undiluted at 2-8 °C for one month or (in aliquots) at -20 °C for longer.



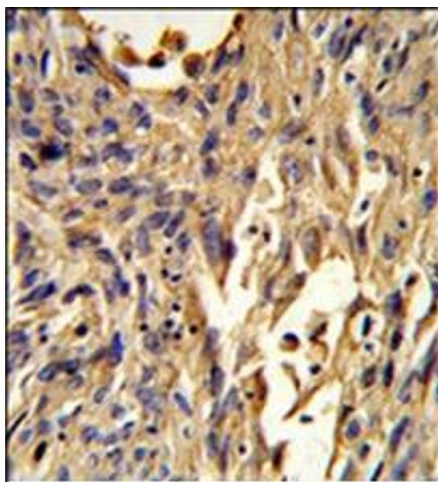
Western Blotting

Image 1. Western blot analysis in NCI-H460 cell line lysates (35 ug/lane) using S100A10 Antibody (Center) Cat.-No AP53777PU-N. S100A10 (arrow) was detected using the purified Pab.



Flow Cytometry

Image 2. Flow Cytometry analysis of NCI-H460 cells using S100A10 Antibody (Center) Cat.-No AP53777PU-N (bottom histogram) compared to a negative control cell (top histogram). FITC-conjugated Goat-anti-Rabbit secondary antibodies were used for the analysis.



Immunohistochemistry (Paraffin-embedded Sections)

Image 3. Immunohistochemistry analysis in Formalin Fixed, Paraffin Embedded Human lung carcinoma using S100A10 Antibody (Center) followed by peroxidase conjugation of the secondary antibody and DAB staining. This data demonstrates the use of S100A10 Antibody (Center) for immunohistochemistry. Clinical relevance has not been evaluated.