



[Go to Product page](#)

Datasheet for ABIN954661

anti-SAAL1 antibody (C-Term)

2 Images

Overview

Quantity:	0.4 mL
Target:	SAAL1
Binding Specificity:	AA 364-393, C-Term
Reactivity:	Human
Host:	Rabbit
Clonality:	Polyclonal
Conjugate:	This SAAL1 antibody is un-conjugated
Application:	Western Blotting (WB), Immunohistochemistry (Paraffin-embedded Sections) (IHC (p)), Enzyme Immunoassay (EIA)

Product Details

Immunogen:	KLH conjugated synthetic peptide between 364-393 amino acids from the C-terminal region of Human SAAL1. Genename: SAAL1
Isotype:	Ig Fraction
Specificity:	Recognizes SAAL1 (C-term).
Purification:	Protein A column followed by peptide Affinity purification

Target Details

Target:	SAAL1
Alternative Name:	SAAL1 (SAAL1 Products)

Target Details

Background: The function of this protein remains unknown.

Gene ID: 113174

NCBI Accession: [NP_612430](#)

Pathways: [SARS-CoV-2 Protein Interactome](#)

Application Details

Application Notes: Optimal working dilution should be determined by the investigator.

Restrictions: For Research Use only

Handling

Format: Liquid

Concentration: 0.25 mg/mL

Buffer: PBS with 0.09 % (W/V) Sodium Azide as preservative

Preservative: Sodium azide

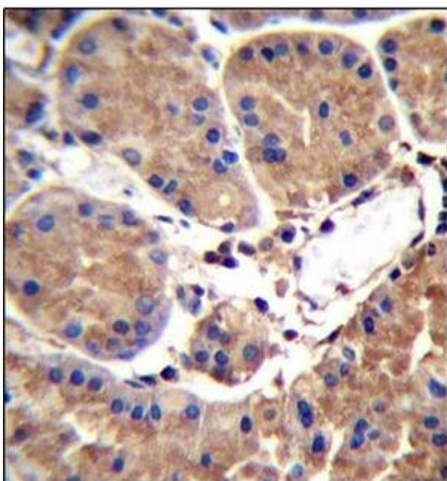
Precaution of Use: This product contains sodium azide: a POISONOUS AND HAZARDOUS SUBSTANCE which should be handled by trained staff only.

Handling Advice: Avoid repeated freezing and thawing.

Storage: 4 °C/-20 °C

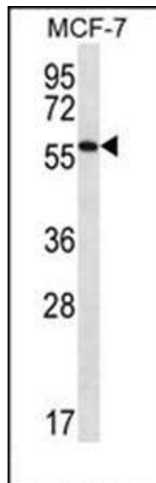
Storage Comment: Store the antibody undiluted at 2-8 °C for one month or (in aliquots) at -20 °C for longer.

Images



Immunohistochemistry (Paraffin-embedded Sections)

Image 1. Immunohistochemistry analysis in Formalin Fixed, Paraffin Embedded Human stomach tissue stained with SAAL1 antibody (C-term) followed by peroxidase conjugation of the secondary antibody and DAB staining. This data demonstrates the use of the SAAL1 Antibody (C-term) for immunohistochemistry. Clinical relevance has not been evaluated.



Western Blotting

Image 2. Western blot analysis in MCF-7 cell line lysates (35 ug/lane) using SAAL1 Antibody (C-term) Cat.-No AP53787PU-N. SAAL1 (arrow) was detected using the purified Pab.