

Datasheet for ABIN954662

anti-SACM1L antibody (C-Term)[Go to Product page](#)**1** Image

Overview

Quantity:	0.4 mL
Target:	SACM1L
Binding Specificity:	AA 415-444, C-Term
Reactivity:	Human
Host:	Rabbit
Clonality:	Polyclonal
Conjugate:	This SACM1L antibody is un-conjugated
Application:	Western Blotting (WB), Enzyme Immunoassay (EIA)

Product Details

Immunogen:	KLH conjugated synthetic peptide between 415~444 amino acids from the C-terminal region of Human SACM1L. Genename: SACM1L
Isotype:	Ig Fraction
Specificity:	Recognizes SACM1L (C-term).
Purification:	Protein A column followed by peptide Affinity purification

Target Details

Target:	SACM1L
Alternative Name:	SACM1L (SACM1L Products)
Background:	SACM1L functions as Phosphoinositide phosphatase that hydrolyzes PtdIns(3)P and

Target Details

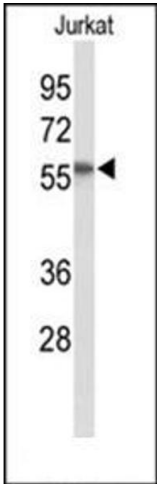
	PtdIns(4)P. Has low activity towards PtdIns(3,5)P2 (By similarity).Synonyms: KIAA0851, Phosphatidylinositide phosphatase SAC1, Suppressor of actin mutations 1-like protein
Gene ID:	22908
NCBI Accession:	NP_054735
Pathways:	Inositol Metabolic Process

Application Details

Application Notes:	Optimal working dilution should be determined by the investigator.
Restrictions:	For Research Use only

Handling

Format:	Liquid
Concentration:	0.25 mg/mL
Buffer:	PBS with 0.09 % (W/V) Sodium Azide as preservative
Preservative:	Sodium azide
Precaution of Use:	This product contains sodium azide: a POISONOUS AND HAZARDOUS SUBSTANCE which should be handled by trained staff only.
Handling Advice:	Avoid repeated freezing and thawing.
Storage:	4 °C/-20 °C
Storage Comment:	Store the antibody undiluted at 2-8 °C for one month or (in aliquots) at -20 °C for longer.



Western Blotting

Image 1. Western blot analysis in Jurkat cell line lysates (35 ug/lane) using SACM1L Antibody (C-term) Cat.-No AP53789PU-N. SACM1L (arrow) was detected using the purified Pab.