

Datasheet for ABIN954669

anti-SAP18 antibody (Middle Region)[Go to Product page](#)**1** Image

Overview

Quantity:	0.4 mL
Target:	SAP18
Binding Specificity:	AA 57-86, Middle Region
Reactivity:	Human
Host:	Rabbit
Clonality:	Polyclonal
Conjugate:	This SAP18 antibody is un-conjugated
Application:	Western Blotting (WB), Enzyme Immunoassay (EIA)

Product Details

Immunogen:	KLH conjugated synthetic peptide between 57-86 amino acids from the Central region of Human SAP18 Genename: SAP18
Isotype:	Ig Fraction
Specificity:	Recognizes SAP18 (Center).
Purification:	Protein A column followed by peptide Affinity purification

Target Details

Target:	SAP18
Alternative Name:	SAP18 (SAP18 Products)
Background:	Component of the SIN3-repressing complex. Enhances the ability of SIN3-HDAC1-mediated

Target Details

transcriptional repression. When tethered to the promoter, it can direct the formation of a repressive complex to core histone proteins. Component of a splicing-dependent multiprotein exon junction complex (EJC) deposited at splice junction on mRNAs. The EJC is a dynamic structure consisting of a few core proteins and several more peripheral nuclear and cytoplasmic associated factors that join the complex only transiently either during EJC assembly or during subsequent mRNA metabolism.Synonyms: 2HOR0202, Cell growth-inhibiting protein 38, GIG38, Histone deacetylase complex subunit SAP18, Sin3-associated polypeptide 18 kDa, Sin3-associated polypeptide p18

Gene ID: 10284

NCBI Accession: [NP_005861](#)

Application Details

Application Notes: Optimal working dilution should be determined by the investigator.

Restrictions: For Research Use only

Handling

Format: Liquid

Concentration: 0.25 mg/mL

Buffer: PBS with 0.09 % (W/V) Sodium Azide as preservative

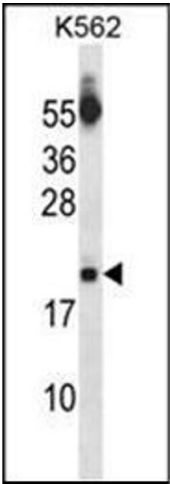
Preservative: Sodium azide

Precaution of Use: This product contains sodium azide: a POISONOUS AND HAZARDOUS SUBSTANCE which should be handled by trained staff only.

Handling Advice: Avoid repeated freezing and thawing.

Storage: 4 °C/-20 °C

Storage Comment: Store the antibody undiluted at 2-8 °C for one month or (in aliquots) at -20 °C for longer.



Western Blotting

Image 1. Western blot analysis of SAP18 Antibody (Center) Cat.-No AP53795PU-N in K562 cell line lysates (35ug/lane).This demonstrates the SAP18 antibody detected the SAP18 protein (arrow).