

Datasheet for ABIN954670  
**anti-SAR1B antibody (Middle Region)**

## 2 Images

[Go to Product page](#)

## Overview

Quantity:	0.4 mL
Target:	SAR1B
Binding Specificity:	AA 96-124, Middle Region
Reactivity:	Human
Host:	Rabbit
Clonality:	Polyclonal
Application:	Western Blotting (WB), Immunohistochemistry (Paraffin-embedded Sections) (IHC (p)), Enzyme Immunoassay (EIA)

## Product Details

Immunogen:	KLH conjugated synthetic peptide between 96-124 amino acids from the Central region of Human SAR1B Gene name: SAR1B
Isotype:	Ig Fraction
Specificity:	Recognizes SAR1B (Center).
Purification:	Protein A column followed by peptide Affinity purification

## Target Details

Target:	SAR1B
Alternative Name:	SAR1B ( <a href="#">SAR1B Products</a> )
Background:	SAR1B belongs to the small GTPase superfamily, SAR1 family. It is involved in transport from the endoplasmic reticulum to the Golgi apparatus and is activated by the guanine nucleotide

## Target Details

exchange factor PREB. SAR1B is involved in the selection of the protein cargo and the assembly of the COPII coat complex. Defects in SAR1B are the cause of chylomicron retention disease (CMRD). CMRD is an autosomal recessive disorder of severe fat malabsorption associated with failure to thrive in infancy. The conditions are characterized by deficiency of fat-soluble vitamins, low blood cholesterol levels, and a selective absence of chylomicrons from blood. Affected individuals accumulate chylomicron-like particles in membrane-bound compartments of enterocytes, which contain large cytosolic lipid droplets. Cellular localization: Endoplasmic reticulum membrane, Peripheral membrane protein. Golgi apparatus, Golgi stack membrane, Peripheral membrane protein. Associated with the endoplasmic reticulum and Golgi stacks, in particular in the juxta-nuclear Golgi region. Synonyms: GTBPB, GTP-binding protein SAR1b, SAR1B, SARA2, SARB

Gene ID: 51128

NCBI Accession: [NP\\_001028675](#)

Pathways: [Lipid Metabolism](#)

## Application Details

Application Notes: Optimal working dilution should be determined by the investigator.

Restrictions: For Research Use only

## Handling

Format: Liquid

Concentration: 0.25 mg/mL

Buffer: PBS with 0.09 % (W/V) Sodium Azide as preservative

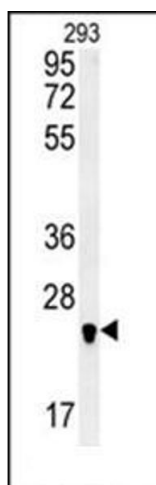
Preservative: Sodium azide

Precaution of Use: This product contains sodium azide: a POISONOUS AND HAZARDOUS SUBSTANCE which should be handled by trained staff only.

Handling Advice: Avoid repeated freezing and thawing.

Storage: 4 °C/-20 °C

Storage Comment: Store the antibody undiluted at 2-8 °C for one month or (in aliquots) at -20 °C for longer.



#### Immunohistochemistry (Paraffin-embedded Sections)

**Image 1.** Immunohistochemistry analysis in Formalin Fixed, Paraffin Embedded Human skeletal muscle stained with SAR1B antibody (Center) followed by peroxidase conjugation of the secondary antibody and DAB staining. This data demonstrates the use of the SAR1B antibody (Center) for immunohistochemistry. Clinical relevance has not been evaluated.

#### Western Blotting

**Image 2.** Western blot analysis of SAR1B Antibody (Center) Cat.-No AP53796PU-N in 293 cell line lysates (35 µg/lane). This demonstrates the SAR1B antibody detected the SAR1B protein (arrow).