

Datasheet for ABIN954673  
**anti-SASH1 antibody (Middle Region)**[Go to Product page](#)

## 2 Images

## Overview

Quantity:	0.4 mL
Target:	SASH1
Binding Specificity:	AA 603-633, Middle Region
Reactivity:	Human, Mouse
Host:	Rabbit
Clonality:	Polyclonal
Conjugate:	This SASH1 antibody is un-conjugated
Application:	Western Blotting (WB), Immunohistochemistry (Paraffin-embedded Sections) (IHC (p)), Enzyme Immunoassay (EIA)

## Product Details

Immunogen:	KLH conjugated synthetic peptide between 603-633 amino acids from the Central region of Human SASH1 (NP_056093.3) Genename: SASH1
Isotype:	Ig Fraction
Specificity:	Recognizes SASH1 (Center).
Purification:	Protein A column followed by peptide Affinity purification

## Target Details

Target:	SASH1
Alternative Name:	SASH1 ( <a href="#">SASH1 Products</a> )

## Target Details

Background: SASH1 may have a role in a signaling pathway. Could act as a tumor suppressor. Expressed ubiquitously, with highest levels in lung, placenta, spleen and thymus. Down-regulated in the majority (74 % ) of breast tumors in comparison with corresponding normal breast epithelial tissues. Synonyms: KIAA0790, PEPE1, Proline-glutamate repeat-containing protein, SAM and SH3 domain-containing protein 1

Gene ID: 23328

NCBI Accession: [NP\\_056093](#)

## Application Details

Application Notes: Optimal working dilution should be determined by the investigator.

Restrictions: For Research Use only

## Handling

Format: Liquid

Concentration: 0.25 mg/mL

Buffer: PBS with 0.09 % (W/V) Sodium Azide as preservative

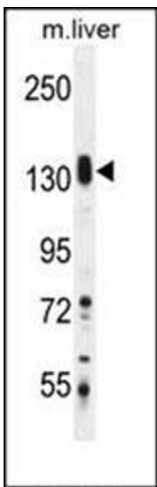
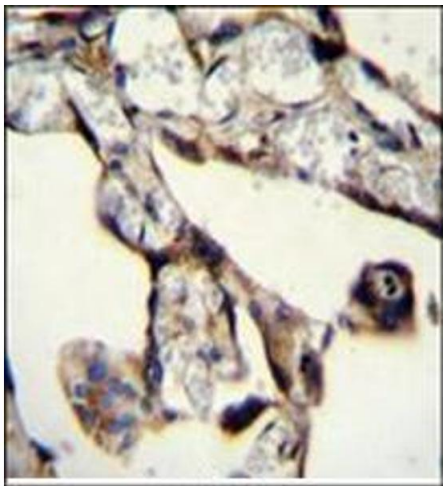
Preservative: Sodium azide

Precaution of Use: This product contains sodium azide: a POISONOUS AND HAZARDOUS SUBSTANCE which should be handled by trained staff only.

Handling Advice: Avoid repeated freezing and thawing.

Storage: 4 °C/-20 °C

Storage Comment: Store the antibody undiluted at 2-8 °C for one month or (in aliquots) at -20 °C for longer.



**Immunohistochemistry (Paraffin-embedded Sections)**

**Image 1.** Immunohistochemistry analysis in Formalin Fixed, Paraffin Embedded Human placenta tissue stained with SASH1 Antibody (N-term) followed by peroxidase conjugation of the secondary antibody and DAB staining. This data demonstrates the use of SASH1 Antibody (Center) for immunohistochemistry. Clinical relevance has not been evaluated.

**Western Blotting**

**Image 2.** Western blot analysis of SASH1 Antibody (Center) Cat.-No AP53800PU-N in Mouse liver tissue lysates (35 µg/lane). This demonstrates the SASH1 antibody detected the SASH1 protein (arrow).