

Datasheet for ABIN954680
anti-SCARF2 antibody (C-Term)[Go to Product page](#)

1 Image

Overview

Quantity:	0.4 mL
Target:	SCARF2
Binding Specificity:	AA 829-858, C-Term
Reactivity:	Human, Mouse
Host:	Rabbit
Clonality:	Polyclonal
Conjugate:	This SCARF2 antibody is un-conjugated
Application:	Western Blotting (WB), Enzyme Immunoassay (EIA)

Product Details

Immunogen:	KLH conjugated synthetic peptide between 829-858 amino acids from the C-terminal region of Human SCARF2 Genename: SCARF2
Isotype:	Ig Fraction
Specificity:	Recognizes SCARF2 (C-term).
Purification:	Protein A column followed by peptide Affinity purification

Target Details

Target:	SCARF2
Alternative Name:	SCARF2 (SCARF2 Products)
Background:	The protein encoded by this gene is similar to SCARF1/SREC-I, a scavenger receptor protein

Target Details

that mediates the binding and degradation of acetylated low density lipoprotein (Ac-LDL). This protein has only little activity of internalizing modified low density lipoproteins (LDL), but it can interact with SCARF1 through its extracellular domain. The association of this protein with SCARF1 is suppressed by the presence of scavenger ligands. Alternatively spliced transcript variants encoding distinct isoforms have been reported. Synonyms: NSR1, SREC2, SRECRP-1, SRECRP1, SREPCR, Scavenger receptor class F member 2, Scavenger receptor expressed by endothelial cells 2

Gene ID: 91179

NCBI Accession: [NP_699165](#)

Application Details

Application Notes: Optimal working dilution should be determined by the investigator.

Restrictions: For Research Use only

Handling

Format: Liquid

Concentration: 0.25 mg/mL

Buffer: PBS with 0.09 % (W/V) Sodium Azide as preservative

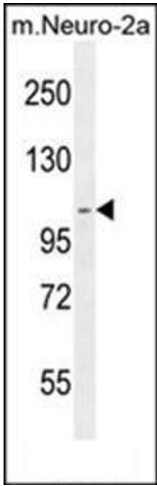
Preservative: Sodium azide

Precaution of Use: This product contains sodium azide: a POISONOUS AND HAZARDOUS SUBSTANCE which should be handled by trained staff only.

Handling Advice: Avoid repeated freezing and thawing.

Storage: 4 °C/-20 °C

Storage Comment: Store the antibody undiluted at 2-8 °C for one month or (in aliquots) at -20 °C for longer.



Western Blotting

Image 1. western blot analysis of SCARF2 Antibody (C-term) Cat.-No AP53808PU-N in Mouse Neuro-2a cell line lysates (35ug/lane). This demonstrates the SCARF2 antibody detected the SCARF2 protein (arrow).