

Datasheet for ABIN954685

**anti-CLEC11A antibody (Middle Region)****3** Images[Go to Product page](#)

## Overview

Quantity:	0.4 mL
Target:	CLEC11A
Binding Specificity:	AA 152-181, Middle Region
Reactivity:	Human
Host:	Rabbit
Clonality:	Polyclonal
Conjugate:	This CLEC11A antibody is un-conjugated
Application:	Western Blotting (WB), Flow Cytometry (FACS), Immunohistochemistry (Paraffin-embedded Sections) (IHC (p)), Enzyme Immunoassay (EIA)

## Product Details

Immunogen:	KLH conjugated synthetic peptide between 152-181 amino acids from the Central region of human CLEC11A
Isotype:	Ig Fraction
Specificity:	This antibody reacts to CLEC11A.
Cross-Reactivity (Details):	Species reactivity (tested):Human.
Purification:	Affinity chromatography on Protein A

## Target Details

Target:	CLEC11A
---------	---------

## Target Details

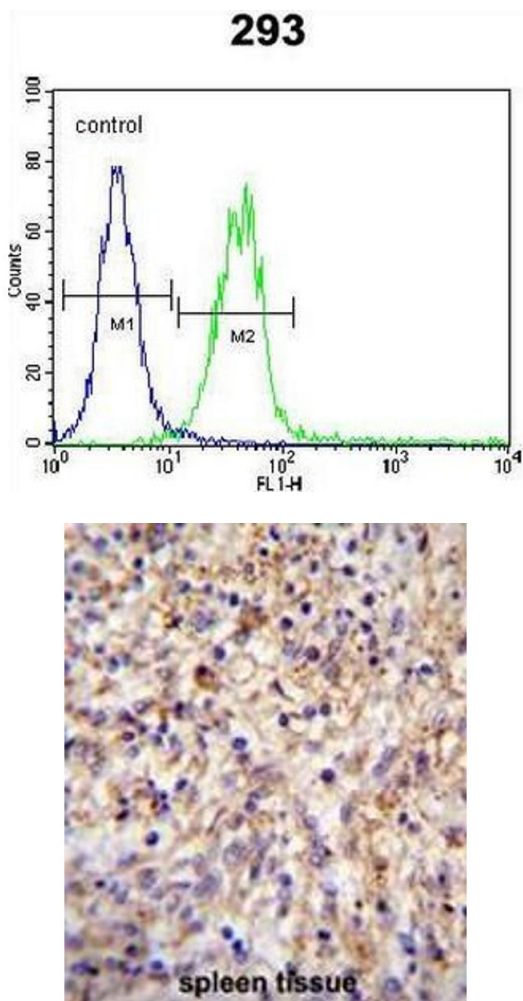
Alternative Name:	SCGF / CLEC11A ( <a href="#">CLEC11A Products</a> )
Background:	This gene encodes a member of the C-type lectin superfamily. The encoded protein is a secreted sulfated glycoprotein and functions as a growth factor for primitive hematopoietic progenitor cells. An alternative splice variant has been described but its biological nature has not been determined. Synonyms: C-type lectin domain family 11 member A, C-type lectin superfamily member 3, CLECSF3, LSLCL, Lymphocyte secreted C-type lectin, Stem cell growth factor, p47
Molecular Weight:	35695 Da
Gene ID:	6320
NCBI Accession:	<a href="#">NP_002966</a>

## Application Details

Application Notes:	Optimal working dilution should be determined by the investigator.
Restrictions:	For Research Use only

## Handling

Format:	Liquid
Concentration:	0.25 mg/mL
Buffer:	PBS, 0.09 % (W/V) sodium azide
Preservative:	Sodium azide
Precaution of Use:	This product contains sodium azide: a POISONOUS AND HAZARDOUS SUBSTANCE which should be handled by trained staff only.
Handling Advice:	Avoid repeated freezing and thawing.
Storage:	4 °C/-20 °C
Storage Comment:	Store undiluted at 2-8 °C for one month or (in aliquots) at -20 °C for longer.

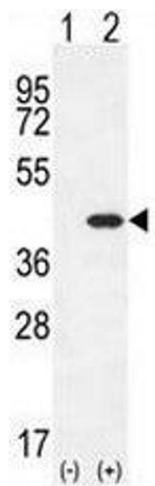


Flow Cytometry

**Image 1.** CLEC11A Antibody (Center) flow cytometric analysis of 293 cells (right histogram) compared to a negative control cell (left histogram).FITC-conjugated goat-anti-rabbit secondary antibodies were used for the analysis.

Immunohistochemistry (Paraffin-embedded Sections)

**Image 2.** CLEC11A Antibody (Center) immunohistochemistry analysis in formalin fixed and paraffin embedded human spleen tissue followed by peroxidase conjugation of the secondary antibody and DAB staining.This data demonstrates the use of CLEC11A Antibody (Center) for immunohistochemistry. Clinical relevance has not been evaluated.



Western Blotting

**Image 3.** Western blot analysis of CLEC11A (arrow) using rabbit polyclonal CLEC11A Antibody (Center) . 293 cell lysates (2 µg/lane) either nontransfected (Lane 1) or transiently transfected (Lane 2) with the CLEC11A gene.