



[Go to Product page](#)

Datasheet for ABIN954687  
**anti-SCEL antibody (Middle Region)**

2 Images

Overview

Quantity:	0.4 mL
Target:	SCEL
Binding Specificity:	AA 247-277, Middle Region
Reactivity:	Human
Host:	Rabbit
Clonality:	Polyclonal
Conjugate:	This SCEL antibody is un-conjugated
Application:	Western Blotting (WB), Flow Cytometry (FACS), Enzyme Immunoassay (EIA)

Product Details

Immunogen:	KLH conjugated synthetic peptide between 247-277 amino acids from the Central region of Human SCEL Genename: SCEL
Isotype:	Ig Fraction
Specificity:	Recognizes SCEL (Center).
Purification:	Protein A column followed by peptide Affinity purification

Target Details

Target:	SCEL
Abstract:	<a href="#">SCEL Products</a>
Background:	The protein encoded by this gene is a precursor to the cornified envelope of terminally

## Target Details

---

differentiated keratinocytes. This protein localizes to the periphery of cells and may function in the assembly or regulation of proteins in the cornified envelope. Transcript variants encoding different isoforms exist. A transcript variant utilizing an alternative polyA signal has been described in the literature, but its full-length nature has not been determined.

Gene ID: 8796

NCBI Accession: [NP\\_003834](#)

## Application Details

---

Application Notes: Optimal working dilution should be determined by the investigator.

Restrictions: For Research Use only

## Handling

---

Format: Liquid

Concentration: 0.25 mg/mL

Buffer: PBS with 0.09 % (W/V) Sodium Azide as preservative

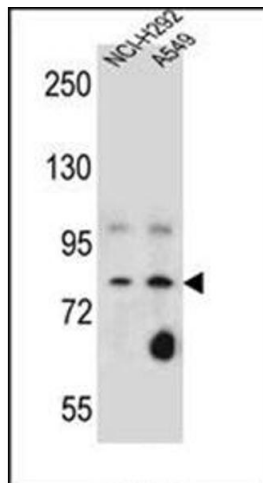
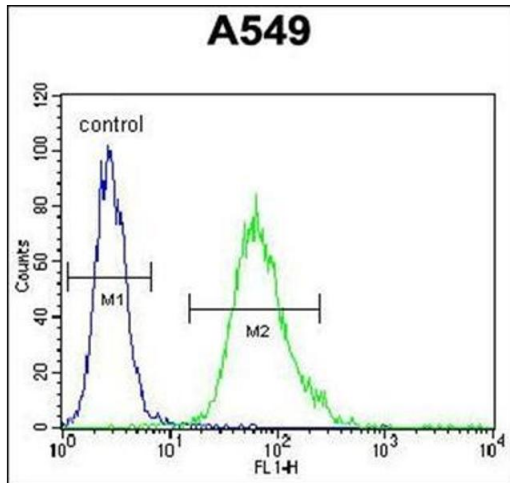
Preservative: Sodium azide

Precaution of Use: This product contains sodium azide: a POISONOUS AND HAZARDOUS SUBSTANCE which should be handled by trained staff only.

Handling Advice: Avoid repeated freezing and thawing.

Storage: 4 °C/-20 °C

Storage Comment: Store the antibody undiluted at 2-8 °C for one month or (in aliquots) at -20 °C for longer.



### Flow Cytometry

**Image 1.** Flow Cytometric analysis of A549 cells using SCEL Antibody (Center) Cat.-No AP53810PU-N (Right histogram) compared to a negative control cell (Left histogram). FITC-conjugated Goat-anti-Rabbit secondary antibodies were used for the analysis.

### Western Blotting

**Image 2.** Western blot analysis of SCEL Antibody (Center) Cat.-No AP53810PU-N in NCI-H292,A549 cell line lysates (35ug/lane). This demonstrates the SCEL antibody detected the SCEL protein (arrow).