

Datasheet for ABIN954689
anti-SCXA antibody (C-Term)[Go to Product page](#)

1 Image

Overview

Quantity:	200 µL
Target:	SCXA
Binding Specificity:	AA 179-209, C-Term
Reactivity:	Human, Mouse
Host:	Rabbit
Clonality:	Polyclonal
Conjugate:	This SCXA antibody is un-conjugated
Application:	Western Blotting (WB), Enzyme Immunoassay (EIA)

Product Details

Immunogen:	KLH conjugated synthetic peptide between 179-209 amino acids from the C-terminal region of Human SCXA (NP_001008272.1, NP_001073983.1) Genename: SCXA
Isotype:	Ig Fraction
Specificity:	Recognizes SCXA (C-term).
Purification:	Protein A column followed by peptide Affinity purification

Target Details

Target:	SCXA
Alternative Name:	Scleraxis (SCX) (SCXA Products)
Background:	Plays an early essential role in mesoderm formation, as well as a later role in formation of

Target Details

somite-derived chondrogenic lineages. Contains 1 basic helix-loop-helix (bHLH) domain. Synonyms: BHLHA41, BHLHA48, Basic helix-loop-helix transcription factor scleraxis, SCXA, SCXB

Gene ID: 100129885

NCBI Accession: [NP_001008272](#)

Application Details

Application Notes: Optimal working dilution should be determined by the investigator.

Restrictions: For Research Use only

Handling

Format: Liquid

Concentration: 0.25 mg/mL

Buffer: PBS with 0.09 % (W/V) Sodium Azide as preservative

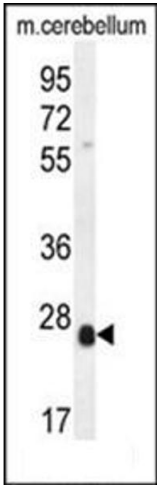
Preservative: Sodium azide

Precaution of Use: This product contains sodium azide: a POISONOUS AND HAZARDOUS SUBSTANCE which should be handled by trained staff only.

Handling Advice: Avoid repeated freezing and thawing.

Storage: 4 °C/-20 °C

Storage Comment: Store the antibody undiluted at 2-8 °C for one month or (in aliquots) at -20 °C for longer.



Western Blotting

Image 1. Western blot analysis of SCXA Antibody (C-term) Cat.-No AP53819PU-N in Mouse cerebellum tissue lysates (35ug/lane). This demonstrates the SCXA antibody detected the SCXA protein (arrow).