

Datasheet for ABIN954700
anti-SEC13 antibody (Middle Region)[Go to Product page](#)

2 Images

Overview

Quantity:	0.4 mL
Target:	SEC13
Binding Specificity:	AA 75-104, Middle Region
Reactivity:	Human
Host:	Rabbit
Clonality:	Polyclonal
Conjugate:	This SEC13 antibody is un-conjugated
Application:	Western Blotting (WB), Flow Cytometry (FACS), Enzyme Immunoassay (EIA)

Product Details

Immunogen:	KLH conjugated synthetic peptide between 75-104 amino acids from the Central region of Human SEC13 Genename: SEC13
Isotype:	Ig Fraction
Specificity:	Recognizes SEC13 (Center).
Purification:	Protein A column followed by peptide Affinity purification

Target Details

Target:	SEC13
Alternative Name:	SEC13 (SEC13 Products)
Background:	The protein encoded by this gene belongs to the SEC13 family of WD-repeat proteins. It is a

Target Details

constituent of the endoplasmic reticulum and the nuclear pore complex. It has similarity to the yeast SEC13 protein, which is required for vesicle biogenesis from endoplasmic reticulum during the transport of proteins. Multiple alternatively spliced transcript variants have been found. Synonyms: D3S1231E, Protein SEC13 homolog, SEC13-like protein 1, SEC13-related protein, SEC13L1, SEC13R

Gene ID: 6396

NCBI Accession: [NP_001129704](#)

Application Details

Application Notes: Optimal working dilution should be determined by the investigator.

Restrictions: For Research Use only

Handling

Format: Liquid

Concentration: 0.25 mg/mL

Buffer: PBS with 0.09 % (W/V) Sodium Azide as preservative

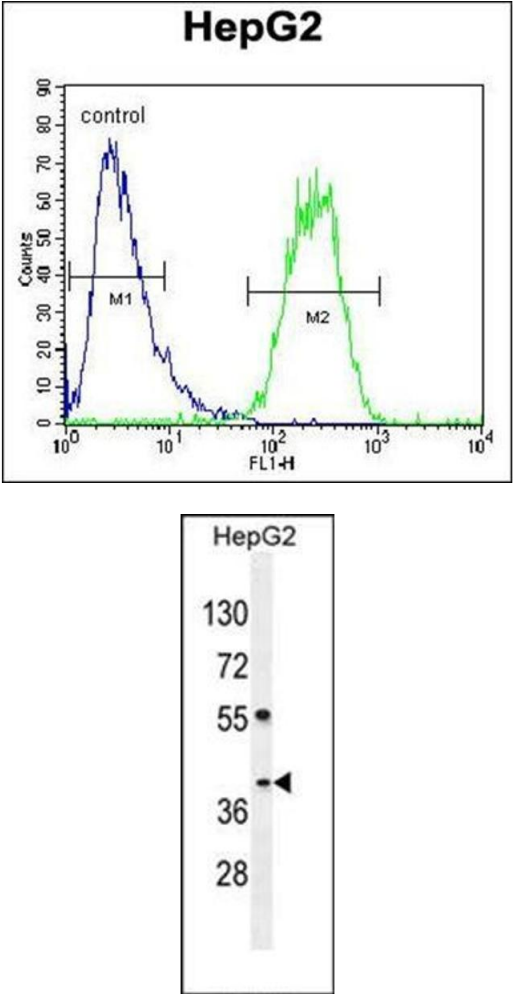
Preservative: Sodium azide

Precaution of Use: This product contains sodium azide: a POISONOUS AND HAZARDOUS SUBSTANCE which should be handled by trained staff only.

Handling Advice: Avoid repeated freezing and thawing.

Storage: 4 °C/-20 °C

Storage Comment: Store the antibody undiluted at 2-8 °C for one month or (in aliquots) at -20 °C for longer.



Flow Cytometry

Image 1. Flow cytometric analysis of HepG2 cells using SEC13 Antibody (Center) Cat.-No AP53829PU-N (Right histogram) compared to a negative control cell (left histogram). FITC-conjugated goat-anti-rabbit secondary antibodies were used for the analysis.

Western Blotting

Image 2. Western blot analysis of SEC13 Antibody (Center) Cat.-No AP53829PU-N in HepG2 cell line lysates (35ug/lane). This demonstrates the SEC13 antibody detected the SEC13 protein (arrow).