



[Go to Product page](#)

Datasheet for ABIN954703

anti-SEC14L5 antibody (Middle Region)

2 Images

Overview

Quantity:	0.4 mL
Target:	SEC14L5
Binding Specificity:	AA 455-485, Middle Region
Reactivity:	Human
Host:	Rabbit
Clonality:	Polyclonal
Conjugate:	This SEC14L5 antibody is un-conjugated
Application:	Western Blotting (WB), Immunohistochemistry (Paraffin-embedded Sections) (IHC (p)), Enzyme Immunoassay (EIA)

Product Details

Immunogen:	KLH conjugated synthetic peptide between 455-485 amino acids from the Central region of Human SEC14L5 Genename: SEC14L5
Isotype:	Ig Fraction
Specificity:	Recognizes SEC14L5 (Center).
Purification:	Protein A column followed by peptide Affinity purification

Target Details

Target:	SEC14L5
Alternative Name:	SEC14L5 (SEC14L5 Products)

Target Details

Background:	The specific function of the protein remains unknown.Synonyms: KIAA0420, SEC14-like protein 5
Gene ID:	9717
NCBI Accession:	NP_055507

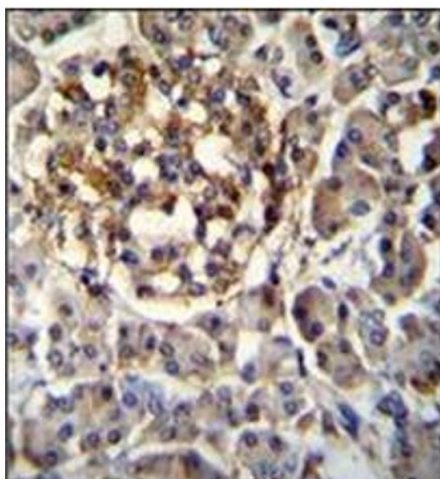
Application Details

Application Notes:	Optimal working dilution should be determined by the investigator.
Restrictions:	For Research Use only

Handling

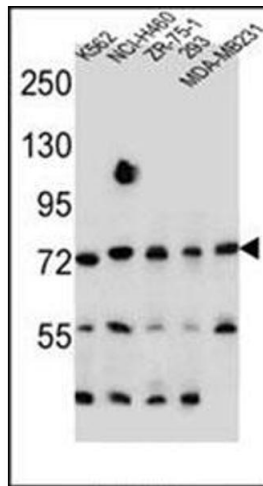
Format:	Liquid
Concentration:	0.25 mg/mL
Buffer:	PBS with 0.09 % (W/V) Sodium Azide as preservative
Preservative:	Sodium azide
Precaution of Use:	This product contains sodium azide: a POISONOUS AND HAZARDOUS SUBSTANCE which should be handled by trained staff only.
Handling Advice:	Avoid repeated freezing and thawing.
Storage:	4 °C/-20 °C
Storage Comment:	Store the antibody undiluted at 2-8 °C for one month or (in aliquots) at -20 °C for longer.

Images



Immunohistochemistry (Paraffin-embedded Sections)

Image 1. Immunohistochemistry analysis in Formalin Fixed, Paraffin Embedded Human pancreas tissue stained with SEC14L5 antibody (Center) followed by peroxidase conjugation of the secondary antibody and DAB staining. This data demonstrates the use of SEC14L5 Antibody (Center) for immunohistochemistry. Clinical relevance has not been evaluated.



Western Blotting

Image 2. Western blot analysis of SEC14L5 Antibody (Center) Cat.-No AP53832PU-N in K562,NCI-H460,ZR-75-1,293,MDA-MB231 cell line lysates (35ug/lane). This demonstrates the SEC14L5 antibody detected the SEC14L5 protein (arrow).