

Datasheet for ABIN954705

anti-SEC61B antibody (Middle Region)[Go to Product page](#)**1** Image

Overview

Quantity:	0.4 mL
Target:	SEC61B
Binding Specificity:	AA 41-70, Middle Region
Reactivity:	Human, Mouse
Host:	Rabbit
Clonality:	Polyclonal
Conjugate:	This SEC61B antibody is un-conjugated
Application:	Western Blotting (WB), Enzyme Immunoassay (EIA)

Product Details

Immunogen:	KLH conjugated synthetic peptide between 41-70 amino acids from the Central region of Human SEC61B (NP_006799.1) Genename: SEC61B
Isotype:	Ig Fraction
Specificity:	Recognizes SEC61B (Center).
Purification:	Protein A column followed by peptide Affinity purification

Target Details

Target:	SEC61B
Alternative Name:	SEC61B (SEC61B Products)
Background:	The Sec61 complex is the central component of the protein translocation apparatus of the

Target Details

endoplasmic reticulum (ER) membrane. Oligomers of the Sec61 complex form a transmembrane channel where proteins are translocated across and integrated into the ER membrane. This complex consists of three membrane proteins- alpha, beta, and gamma. This gene encodes the beta-subunit protein. The Sec61 subunits are also observed in the post-ER compartment, suggesting that these proteins can escape the ER and recycle back. There is evidence for multiple polyadenylated sites for this transcript.Synonyms: Protein transport protein Sec61 subunit beta

Gene ID: 10952

NCBI Accession: [NP_006799](#)

Pathways: [Protein targeting to Nucleus](#)

Application Details

Application Notes: Optimal working dilution should be determined by the investigator.

Restrictions: For Research Use only

Handling

Format: Liquid

Concentration: 0.25 mg/mL

Buffer: PBS with 0.09 % (W/V) Sodium Azide as preservative

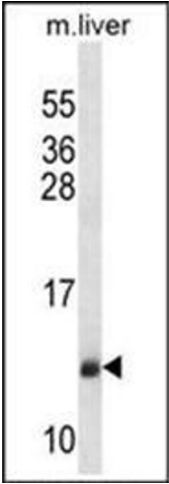
Preservative: Sodium azide

Precaution of Use: This product contains sodium azide: a POISONOUS AND HAZARDOUS SUBSTANCE which should be handled by trained staff only.

Handling Advice: Avoid repeated freezing and thawing.

Storage: 4 °C/-20 °C

Storage Comment: Store the antibody undiluted at 2-8 °C for one month or (in aliquots) at -20 °C for longer.



Western Blotting

Image 1. Western blot analysis of SEC61B Antibody (Center) Cat.-No AP53833PU-N in Mouse liver tissue lysates (35ug/lane). This demonstrates the SEC61B antibody detected the SEC61B protein (arrow).