

Datasheet for ABIN954711
anti-SEL1L antibody (Middle Region)

3 Images

[Go to Product page](#)

Overview

Quantity:	0.4 mL
Target:	SEL1L
Binding Specificity:	AA 159-186, Middle Region
Reactivity:	Human
Host:	Rabbit
Clonality:	Polyclonal
Conjugate:	This SEL1L antibody is un-conjugated
Application:	Western Blotting (WB), Flow Cytometry (FACS), Immunohistochemistry (Paraffin-embedded Sections) (IHC (p)), Enzyme Immunoassay (EIA)

Product Details

Immunogen:	KLH conjugated synthetic peptide between 159-186 amino acids from the Central region of Human SEL1L Genename: SEL1L
Isotype:	Ig Fraction
Specificity:	Recognizes SEL1L (Center).
Purification:	Protein A column followed by peptide Affinity purification

Target Details

Target:	SEL1L
Alternative Name:	SEL1L (SEL1L Products)

Target Details

Background:	May play a role in Notch signaling (By similarity). May be involved in the endoplasmic reticulum quality control (ERQC) system also called ER-associated degradation (ERAD) involved in ubiquitin-dependent degradation of misfolded endoplasmic reticulum proteins.Synonyms: Protein sel-1 homolog 1, Sel-1L, Suppressor of lin-12-like protein 1, TSA305
-------------	--

Gene ID:	6400
----------	------

NCBI Accession:	NP_005056
-----------------	---------------------------

Application Details

Application Notes:	Optimal working dilution should be determined by the investigator.
--------------------	--

Restrictions:	For Research Use only
---------------	-----------------------

Handling

Format:	Liquid
---------	--------

Concentration:	0.25 mg/mL
----------------	------------

Buffer:	PBS with 0.09 % (W/V) Sodium Azide as preservative
---------	--

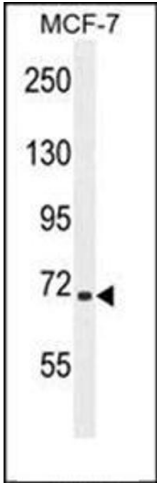
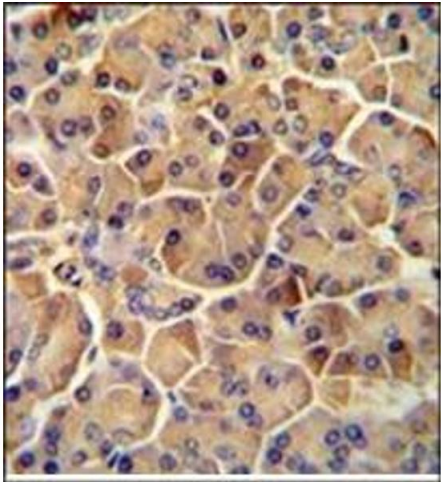
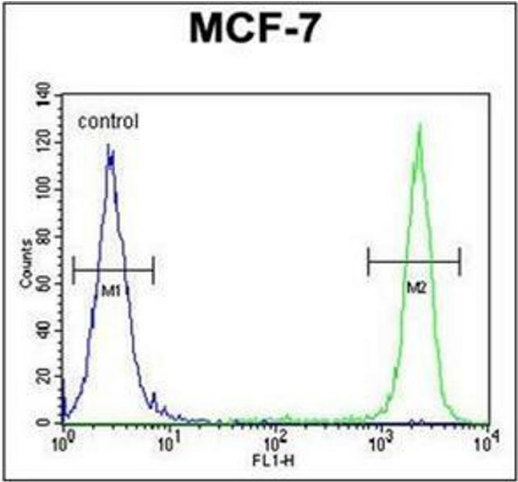
Preservative:	Sodium azide
---------------	--------------

Precaution of Use:	This product contains sodium azide: a POISONOUS AND HAZARDOUS SUBSTANCE which should be handled by trained staff only.
--------------------	--

Handling Advice:	Avoid repeated freezing and thawing.
------------------	--------------------------------------

Storage:	4 °C/-20 °C
----------	-------------

Storage Comment:	Store the antibody undiluted at 2-8 °C for one month or (in aliquots) at -20 °C for longer.
------------------	---



Flow Cytometry

Image 1. Flow cytometric analysis of MCF-7 cells using SEL1L Antibody (Center) Cat.-No AP53837PU-N (Right histogram) compared to a negative control cell (Left histogram). FITC-conjugated Goat-anti-Rabbit secondary antibodies were used for the analysis.

Immunohistochemistry (Paraffin-embedded Sections)

Image 2. Immunohistochemistry analysis in Formalin Fixed, Paraffin Embedded Human pancreas tissue stained with SEL1L antibody (Center) followed by peroxidase conjugation of the secondary antibody and DAB staining. This data demonstrates the use of the SEL1L antibody (Center) for immunohistochemistry. Clinical relevance has not been evaluated.

Western Blotting

Image 3. Western blot analysis of SEL1L Antibody (Center) Cat.-No AP53837PU-N in MCF-7 cell line lysates (35ug/lane). This demonstrates the SEL1L antibody detected the SEL1L protein (arrow).