



[Go to Product page](#)

Datasheet for ABIN954715
anti-SEPN1 antibody (C-Term)

2 Images

Overview

Quantity:	0.4 mL
Target:	SEPN1
Binding Specificity:	AA 416-445, C-Term
Reactivity:	Human
Host:	Rabbit
Clonality:	Polyclonal
Conjugate:	This SEPN1 antibody is un-conjugated
Application:	Western Blotting (WB), Immunohistochemistry (Paraffin-embedded Sections) (IHC (p)), Enzyme Immunoassay (EIA)

Product Details

Immunogen:	KLH conjugated synthetic peptide between 416-445 amino acids from the C-terminal region of Human SEPN1 Genename: SEPN1
Isotype:	Ig Fraction
Specificity:	Recognizes SEPN1 (C-term).
Purification:	Protein A column followed by peptide Affinity purification

Target Details

Target:	SEPN1
Alternative Name:	Selenoprotein N (SEPN1) (SEPN1 Products)

Target Details

Background: This gene encodes a selenoprotein, which contains a selenocysteine (Sec) residue at its active site. The selenocysteine is encoded by the UGA codon that normally signals translation termination. The 3' UTR of selenoprotein genes have a common stem-loop structure, the sec insertion sequence (SECIS), that is necessary for the recognition of UGA as a Sec codon rather than as a stop signal. Mutations in this gene cause the classical phenotype of multimimicore disease and congenital muscular dystrophy with spinal rigidity and restrictive respiratory syndrome. Two alternatively spliced transcript variants encoding distinct isoforms have been found for this gene. Synonyms: SELN

Gene ID: 57190

NCBI Accession: [NP_065184](#)

Pathways: [Skeletal Muscle Fiber Development](#)

Application Details

Application Notes: Optimal working dilution should be determined by the investigator.

Restrictions: For Research Use only

Handling

Format: Liquid

Concentration: 0.25 mg/mL

Buffer: PBS with 0.09 % (W/V) Sodium Azide as preservative

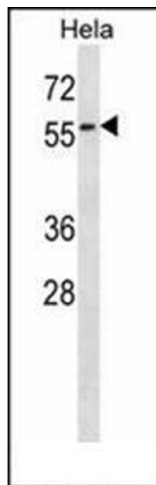
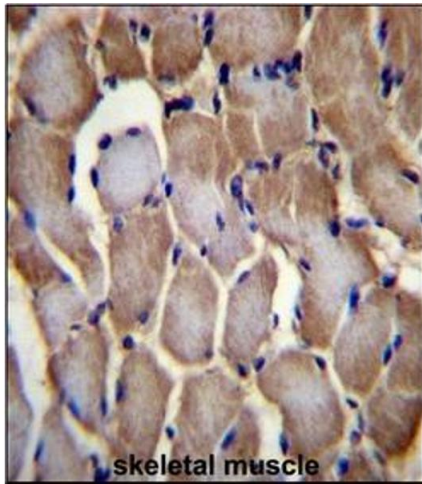
Preservative: Sodium azide

Precaution of Use: This product contains sodium azide: a POISONOUS AND HAZARDOUS SUBSTANCE which should be handled by trained staff only.

Handling Advice: Avoid repeated freezing and thawing.

Storage: 4 °C/-20 °C

Storage Comment: Store the antibody undiluted at 2-8 °C for one month or (in aliquots) at -20 °C for longer.



Immunohistochemistry (Paraffin-embedded Sections)

Image 1. Immunohistochemistry analysis in Formalin Fixed, Paraffin Embedded Human skeletal muscle tissue stained with SEPN1 antibody (C-term) followed by peroxidase conjugation of the secondary antibody and DAB staining. This data demonstrates the use of SEPN1 Antibody (C-term) for immunohistochemistry. Clinical relevance has not been evaluated.

Western Blotting

Image 2. Western blot analysis of SEPN1 Antibody (C-term) Cat.-No AP53849PU-N in HeLa cell line lysates (35ug/lane). This demonstrates the SEPN1 antibody detected the SEPN1 protein (arrow).