

Datasheet for ABIN954719  
**anti-SEMA3D antibody (C-Term)**[Go to Product page](#)

## 1 Image

## Overview

Quantity:	0.4 mL
Target:	SEMA3D
Binding Specificity:	AA 610-640, C-Term
Reactivity:	Human
Host:	Rabbit
Clonality:	Polyclonal
Conjugate:	This SEMA3D antibody is un-conjugated
Application:	Western Blotting (WB), Enzyme Immunoassay (EIA)

## Product Details

Immunogen:	KLH conjugated synthetic peptide between 610-640 amino acids from the C-terminal region of Human SEMA3D Genename: SEMA3D
Isotype:	Ig Fraction
Specificity:	Recognizes SEMA3D (C-term).
Purification:	Protein A column followed by peptide Affinity purification

## Target Details

Target:	SEMA3D
Alternative Name:	SEMA3D ( <a href="#">SEMA3D Products</a> )
Background:	Induces the collapse and paralysis of neuronal growth cones. Could potentially act as repulsive

## Target Details

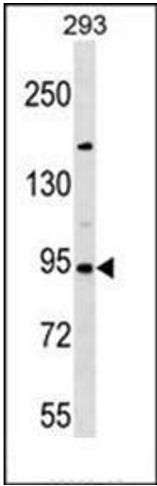
	cues toward specific neuronal populations. Binds to neuropilin (By similarity).Synonyms: Semaphorin-3D
Gene ID:	223117
NCBI Accession:	<a href="#">NP_689967</a>
Pathways:	<a href="#">Regulation of Cell Size</a>

## Application Details

Application Notes:	Optimal working dilution should be determined by the investigator.
Restrictions:	For Research Use only

## Handling

Format:	Liquid
Concentration:	0.25 mg/mL
Buffer:	PBS with 0.09 % (W/V) Sodium Azide as preservative
Preservative:	Sodium azide
Precaution of Use:	This product contains sodium azide: a POISONOUS AND HAZARDOUS SUBSTANCE which should be handled by trained staff only.
Handling Advice:	Avoid repeated freezing and thawing.
Storage:	4 °C/-20 °C
Storage Comment:	Store the antibody undiluted at 2-8 °C for one month or (in aliquots) at -20 °C for longer.



Western Blotting

**Image 1.** Western blot analysis of SEMA3D Antibody (C-term) Cat.-No AP53844PU-N in 293 cell line lysates (35ug/lane). This demonstrates the SEMA3D antibody detected the SEMA3D protein (arrow).