

Datasheet for ABIN954724

**anti-Septin 1 antibody (N-Term)**[Go to Product page](#)**1** Image

## Overview

Quantity:	0.4 mL
Target:	Septin 1 (SEPT1)
Binding Specificity:	AA 53-82, N-Term
Reactivity:	Human
Host:	Rabbit
Clonality:	Polyclonal
Conjugate:	This Septin 1 antibody is un-conjugated
Application:	Western Blotting (WB), Enzyme Immunoassay (EIA)

## Product Details

Immunogen:	KLH conjugated synthetic peptide between 53-82 amino acids from the N-terminal region of Human SEPT1 Genename: SEPT1
Isotype:	Ig Fraction
Specificity:	Recognizes SEPT1 (N-term).
Purification:	Protein A column followed by peptide Affinity purification

## Target Details

Target:	Septin 1 (SEPT1)
Alternative Name:	Septin-1 (SEPT1) ( <a href="#">SEPT1 Products</a> )
Background:	This gene is a member of the septin family of GTPases. <a href="#">x000D_ Members of this family are</a>

## Target Details

required for cytokinesis. This gene\_x000D\_ encodes a protein associated with the tau-based paired helical\_x000D\_ filament core, and may contribute to the formation of\_x000D\_ neurofibrillary tangles in Alzheimer's disease. [provided by\_x000D\_ RefSeq].Synonyms: DIFF6, LARP, NY-BR-24, PNUTL3, Peanut-like protein 3, Serologically defined breast cancer antigen NY-BR-24

Gene ID: 1731

NCBI Accession: [NP\\_443070](#)

## Application Details

Application Notes: Optimal working dilution should be determined by the investigator.

Restrictions: For Research Use only

## Handling

Format: Liquid

Concentration: 0.25 mg/mL

Buffer: PBS with 0.09 % (W/V) Sodium Azide as preservative

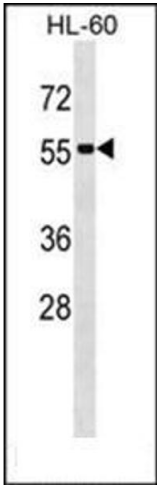
Preservative: Sodium azide

Precaution of Use: This product contains sodium azide: a POISONOUS AND HAZARDOUS SUBSTANCE which should be handled by trained staff only.

Handling Advice: Avoid repeated freezing and thawing.

Storage: 4 °C/-20 °C

Storage Comment: Store the antibody undiluted at 2-8 °C for one month or (in aliquots) at -20 °C for longer.



Western Blotting

**Image 1.** western blot analysis of SEPT1 Antibody (N-term) Cat.-No AP53850PU-N in HL-60 cell line lysates (35ug/lane). This demonstrates the SEPT1 antibody detected the SEPT1 protein (arrow).