

Datasheet for ABIN954731
anti-SRGN antibody (C-Term)[Go to Product page](#)

2 Images

Overview

Quantity:	0.4 mL
Target:	SRGN
Binding Specificity:	AA 118-148, C-Term
Reactivity:	Human
Host:	Rabbit
Clonality:	Polyclonal
Conjugate:	This SRGN antibody is un-conjugated
Application:	Western Blotting (WB), Flow Cytometry (FACS), Enzyme Immunoassay (EIA)

Product Details

Immunogen:	Synthetic peptide - KLH conjugated - corresponding to the C-terminal region (between 118-148aa) of human Serglycin.
Isotype:	Ig Fraction
Specificity:	This antibody recognizes Serglycin at c-term.
Cross-Reactivity (Details):	Species reactivity (tested):Human
Purification:	Purified through a Protein A column followed by peptide affinity purification

Target Details

Target:	SRGN
Alternative Name:	Serglycin / PRG1 (SRGN Products)

Target Details

Background: The SRGN gene encodes serglycin, a protein best known as a hematopoietic cell granule proteoglycan. Proteoglycans stored in the secretory granules of many hematopoietic cells also contain a protease-resistant peptide core, which may be important for neutralizing hydrolytic enzymes. This encoded protein was found to be associated with the macromolecular complex of granzymes and perforin, which may serve as a mediator of granule-mediated apoptosis. Two transcript variants, only one of them protein-coding, have been found for this gene. **Synonyms:** Hematopoietic proteoglycan core protein, Platelet proteoglycan core protein, SRGN, Secretory granule proteoglycan core protein

Gene ID: 5552

NCBI Accession: [NP_002718](#)

Pathways: [Maintenance of Protein Location](#)

Application Details

Application Notes: Optimal working dilution should be determined by the investigator.

Restrictions: For Research Use only

Handling

Format: Liquid

Concentration: 0.25 mg/mL

Buffer: PBS with 0.09 % (W/V) Sodium azide

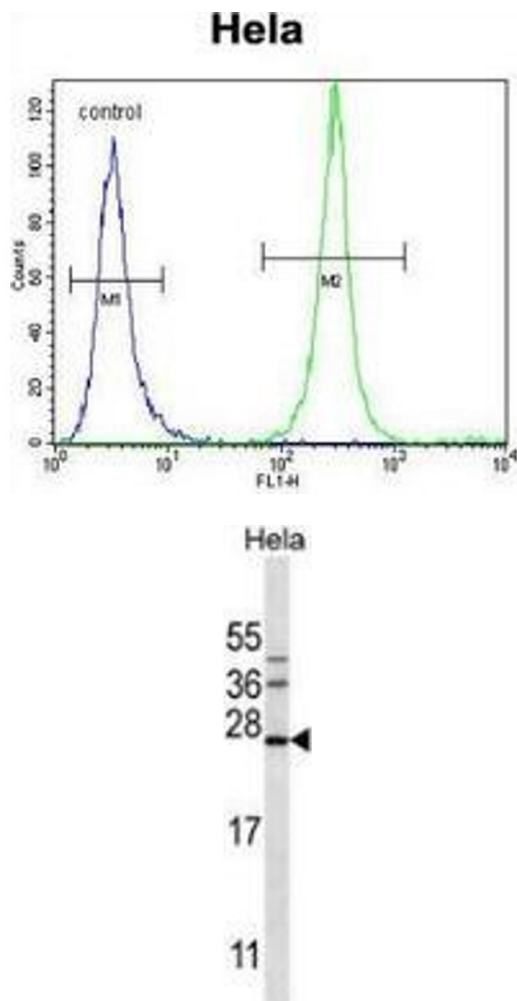
Preservative: Sodium azide

Precaution of Use: This product contains sodium azide: a POISONOUS AND HAZARDOUS SUBSTANCE which should be handled by trained staff only.

Handling Advice: Avoid repeated freezing and thawing.

Storage: 4 °C/-20 °C

Storage Comment: Store undiluted at 2-8 °C for one month or (in aliquots) at -20 °C for longer.



Flow Cytometry

Image 1. Flow cytometric analysis of Hela cells (right histogram) compared to a negative control cell (left histogram) using Serglycin / PRG1 Antibody (C-term), followed by FITC-conjugated goat-anti-rabbit secondary antibodies.

Western Blotting

Image 2. Western blot analysis in Hela cell line lysates (35ug/lane) using Serglycin / PRG1 Antibody (C-term). This demonstrates the Serglycin antibody detected the Serglycin protein (arrow).