

Datasheet for ABIN954743  
**anti-SERPINA9 antibody (Middle Region)**[Go to Product page](#)

## 3 Images

## Overview

Quantity:	0.4 mL
Target:	SERPINA9
Binding Specificity:	AA 201-230, Middle Region
Reactivity:	Human
Host:	Rabbit
Clonality:	Polyclonal
Conjugate:	This SERPINA9 antibody is un-conjugated
Application:	Western Blotting (WB), Flow Cytometry (FACS), Immunohistochemistry (Paraffin-embedded Sections) (IHC (p)), Enzyme Immunoassay (EIA)

## Product Details

Immunogen:	KLH conjugated synthetic peptide between 201~230 amino acids from the Central region of Human SERPINA9 Genename: SERPINA9
Isotype:	Ig Fraction
Specificity:	This antibody recognizes SERPINA9 (Center).
Purification:	Protein A Chromatography followed by peptide Affinity purification.

## Target Details

Target:	SERPINA9
Alternative Name:	SERPINA9 ( <a href="#">SERPINA9 Products</a> )

## Target Details

Background:	SERPINA9 is a protease inhibitor that inhibits trypsin and trypsin-like serine proteases (in vitro). This protein inhibits plasmin and thrombin with lower efficiency (in vitro).Synonyms: GCET1, Germinal center B-cell-expressed transcript 1 protein, SERPINA11, Serpin A9, UNQ692/PRO1337
-------------	--

Gene ID:	327657
----------	--------

NCBI Accession:	<a href="#">NP_001035983</a>
-----------------	------------------------------

## Application Details

Application Notes:	Optimal working dilution should be determined by the investigator.
--------------------	--

Restrictions:	For Research Use only
---------------	-----------------------

## Handling

Format:	Liquid
---------	--------

Concentration:	0.25 mg/mL
----------------	------------

Buffer:	PBS with 0.09 % (W/V) Sodium Azide as preservative.
---------	---

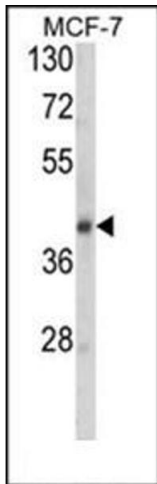
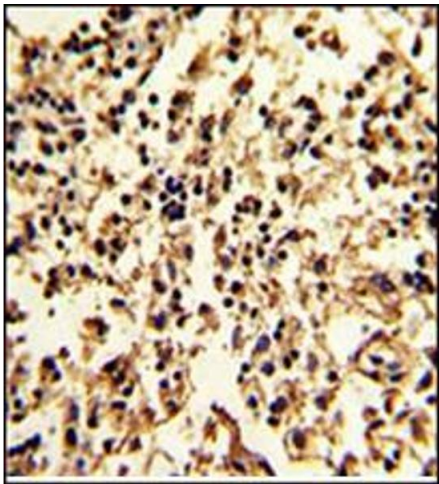
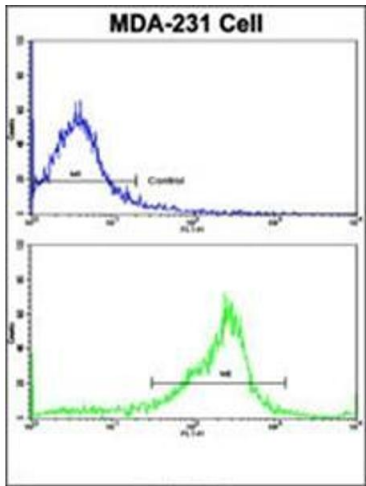
Preservative:	Sodium azide
---------------	--------------

Precaution of Use:	This product contains sodium azide: a POISONOUS AND HAZARDOUS SUBSTANCE which should be handled by trained staff only.
--------------------	---

Handling Advice:	Avoid repeated freezing and thawing.
------------------	--------------------------------------

Storage:	4 °C/-20 °C
----------	-------------

Storage Comment:	Store the antibody undiluted at 2-8 °C for one month or (in aliquots) at -20 °C for longer.
------------------	---



### Flow Cytometry

**Image 1.** Flow Cytometric analysis of MDA-231 cells using SERPINA9 Antibody (Center)(bottom Histogram) compared to a Negative Control cell (top Histogram). FITC-conjugated Goat-anti-Rabbit secondary antibodies were used for the analysis.

### Immunohistochemistry (Paraffin-embedded Sections)

**Image 2.** Formalin-Fixed, Paraffin-Embedded Human lymph with SERPINA9 Antibody (Center), which was peroxidase-conjugated to the secondary antibody, followed by DAB staining. This data demonstrates the use of this antibody for Immunohistochemistry. Clinical relevance has not been evaluated.

### Western Blotting

**Image 3.** Western blot analysis of SERPINA9 Antibody (Center) Cat.No. AP53860PU-N in MCF-7 cell line lysates (35 µg/lane). SERPINA9 (arrow) was detected using the purified Pab.