

Datasheet for ABIN954745
anti-SERPINB4 antibody (C-Term)[Go to Product page](#)

2 Images

Overview

Quantity:	0.4 mL
Target:	SERPINB4
Binding Specificity:	AA 275-304, C-Term
Reactivity:	Human
Host:	Rabbit
Clonality:	Polyclonal
Conjugate:	This SERPINB4 antibody is un-conjugated
Application:	Western Blotting (WB), Flow Cytometry (FACS), Enzyme Immunoassay (EIA)

Product Details

Immunogen:	Synthetic peptide - KLH conjugated - corresponding to the C-terminal region (between 275-304aa) of human SERPINB4 / SCCA2
Isotype:	Ig Fraction
Specificity:	This antibody recognizes SERPINB4 / SCCA2
Cross-Reactivity (Details):	Species reactivity (tested):Human
Purification:	Affinity Purified

Target Details

Target:	SERPINB4
Alternative Name:	SERPINB4 / SCCA2 (SERPINB4 Products)

Target Details

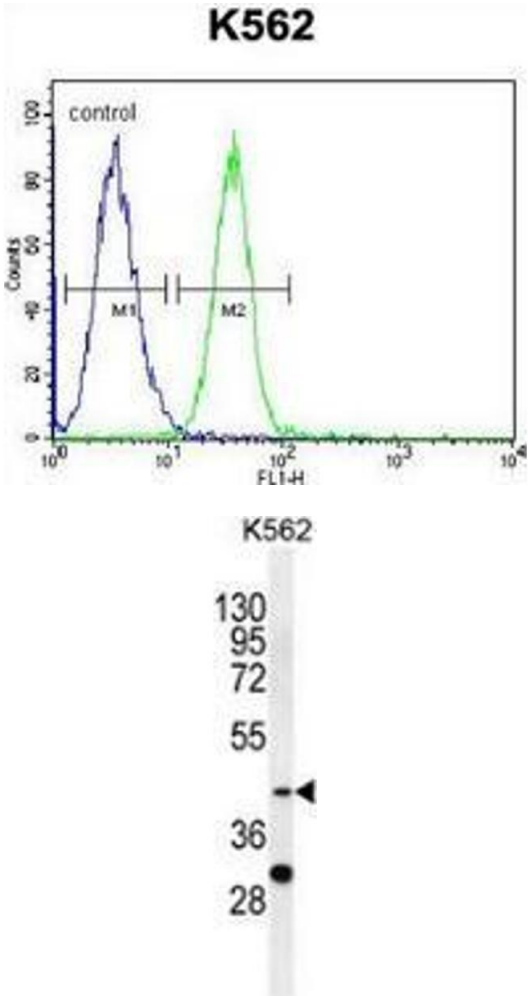
Background:	SERPINB4 may act as a protease inhibitor to modulate the host immune response against tumor cells.Synonyms: Leupin, PI-11, PI11, Peptidase inhibitor 11, SCCA-2, Serpin B4, Squamous cell carcinoma antigen 2
Gene ID:	6318
NCBI Accession:	NP_002965

Application Details

Application Notes:	Optimal working dilution should be determined by the investigator.
Restrictions:	For Research Use only

Handling

Format:	Liquid
Concentration:	0.25 mg/mL
Buffer:	PBS with 0.09 % (W/V) Sodium azide
Preservative:	Sodium azide
Precaution of Use:	This product contains sodium azide: a POISONOUS AND HAZARDOUS SUBSTANCE which should be handled by trained staff only.
Handling Advice:	Avoid repeated freezing and thawing.
Storage:	4 °C/-20 °C
Storage Comment:	Store undiluted at 2-8 °C for one month or (in aliquots) at -20 °C for longer.



Flow Cytometry

Image 1. Flow cytometric analysis of K562 cells (right histogram) compared to a negative control cell (left histogram) using SERPINB4 / SCCA2 Antibody (C-term), followed by FITC-conjugated goat-anti-rabbit secondary antibodies.

Western Blotting

Image 2. Western blot analysis in K562 cell line lysates (35ug/lane) using SERPINB4 / SCCA2 Antibody (C-term). This demonstrates the SERPINB4 antibody detected the SERPINB4 protein (arrow).