



[Go to Product page](#)

Datasheet for ABIN954746

anti-SERPINB5 antibody (Middle Region)

4 Images

Overview

Quantity:	0.4 mL
Target:	SERPINB5
Binding Specificity:	AA 101-131, Middle Region
Reactivity:	Human, Mouse
Host:	Rabbit
Clonality:	Polyclonal
Conjugate:	This SERPINB5 antibody is un-conjugated
Application:	Western Blotting (WB), Immunofluorescence (IF), Immunohistochemistry (Paraffin-embedded Sections) (IHC (p)), Enzyme Immunoassay (EIA)

Product Details

Immunogen:	KLH conjugated synthetic peptide between 101-131 amino acids from the Central region of human SERPINB5 / Maspin
Isotype:	Ig Fraction
Specificity:	This antibody recognizes Human and Mouse SERPINB5 / Maspin (Center).
Purification:	Protein A column, followed by peptide affinity purification

Target Details

Target:	SERPINB5
Alternative Name:	SERPINB5 / Maspin (SERPINB5 Products)

Target Details

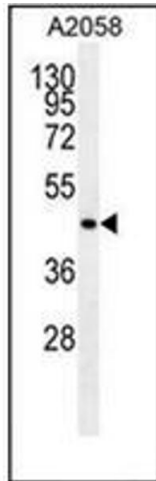
Background:	SERPINB5 is a tumor suppressor. It blocks the growth, invasion, and metastatic properties of mammary tumors. As it does not undergo the S (stressed) to R (relaxed) conformational transition characteristic of active serpins, it exhibits no serine protease inhibitory activity.Synonyms: PI-5, PI5, Peptidase inhibitor 5, Protease inhibitor 5, Serpin B5
Molecular Weight:	42100 Da
Gene ID:	5268
NCBI Accession:	NP_002630
Pathways:	p53 Signaling

Application Details

Application Notes:	Optimal working dilution should be determined by the investigator.
Restrictions:	For Research Use only

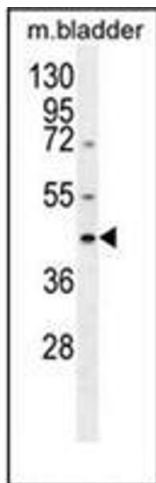
Handling

Format:	Liquid
Concentration:	0.25 mg/mL
Buffer:	PBS containing 0.09 % (W/V) Sodium Azide as preservative
Preservative:	Sodium azide
Precaution of Use:	This product contains sodium azide: a POISONOUS AND HAZARDOUS SUBSTANCE which should be handled by trained staff only.
Handling Advice:	Avoid repeated freezing and thawing.
Storage:	4 °C/-20 °C
Storage Comment:	Store undiluted at 2-8 °C for one month or (in aliquots) at -20 °C for longer.



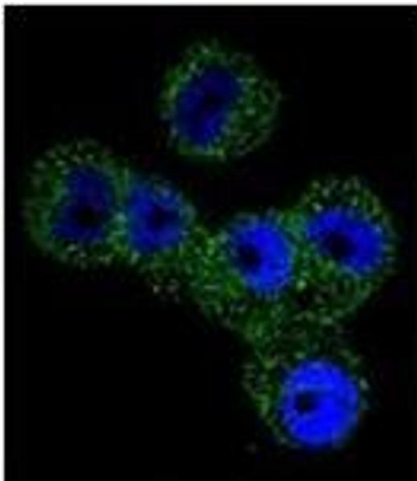
Western Blotting

Image 1. Western blot analysis of SERPINB5 / Maspin Antibody (Center) in A2058 cell line lysates (35ug/lane). This demonstrates the Maspin antibody detected the Maspin protein (arrow).



Western Blotting

Image 2. western blot analysis of SERPINB5 / Maspin Antibody (Center) in mouse bladder tissue lysates (35ug/lane). This demonstrates the Maspin antibody detected the Maspin protein (arrow).



Immunofluorescence

Image 3. Confocal immunofluorescent analysis of SERPINB5 / Maspin Antibody (Center) Cat.-No AP52612PU-N with A2058 cell followed by Alexa Fluor 488-conjugated goat anti-rabbit IgG (green). DAPI was used to stain the cell nuclear (blue).

Please check the [product details page](#) for more images. Overall 4 images are available for ABIN954746.