

Datasheet for ABIN954749  
**anti-SERPINE2 antibody (Middle Region)**[Go to Product page](#)

## 2 Images

## Overview

Quantity:	0.4 mL
Target:	SERPINE2
Binding Specificity:	AA 105-136, Middle Region
Reactivity:	Human
Host:	Rabbit
Clonality:	Polyclonal
Conjugate:	This SERPINE2 antibody is un-conjugated
Application:	Western Blotting (WB), Immunohistochemistry (Paraffin-embedded Sections) (IHC (p)), Enzyme Immunoassay (EIA)

## Product Details

Immunogen:	KLH conjugated synthetic peptide between 105-136 amino acids from the Central region of Human SERPINE2. Genename: SERPINE2
Isotype:	Ig Fraction
Specificity:	Recognizes SERPINE2 (Center).
Purification:	Protein A column followed by peptide Affinity purification

## Target Details

Target:	SERPINE2
Alternative Name:	SERPINE2 ( <a href="#">SERPINE2 Products</a> )

## Target Details

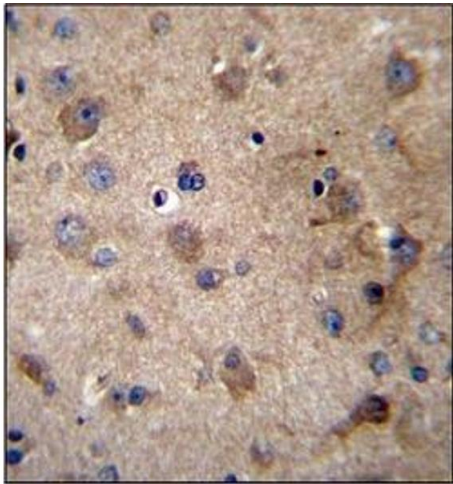
Background:	SERPINE2 is a serine protease inhibitor with activity toward thrombin, trypsin, and urokinase. Promotes neurite extension by inhibiting thrombin. Binds heparin.Synonyms: Glia-derived nexin, PI-7, PI7, PN-1, PN1, Protease nexin 1, Serpin E2
Gene ID:	5270
NCBI Accession:	<a href="#">NP_001130000</a>

## Application Details

Application Notes:	Optimal working dilution should be determined by the investigator.
Restrictions:	For Research Use only

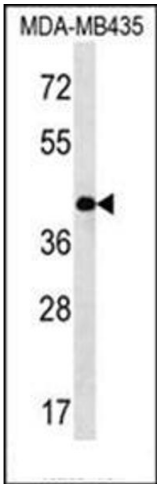
## Handling

Format:	Liquid
Concentration:	0.25 mg/mL
Buffer:	PBS with 0.09 % (W/V) Sodium Azide as preservative
Preservative:	Sodium azide
Precaution of Use:	This product contains sodium azide: a POISONOUS AND HAZARDOUS SUBSTANCE which should be handled by trained staff only.
Handling Advice:	Avoid repeated freezing and thawing.
Storage:	4 °C/-20 °C
Storage Comment:	Store the antibody undiluted at 2-8 °C for one month or (in aliquots) at -20 °C for longer.



**Immunohistochemistry (Paraffin-embedded Sections)**

**Image 1.** Immunohistochemistry analysis in Formalin Fixed, Paraffin Embedded Human brain tissue stained with SERPINE2 antibody (Center) followed by peroxidase conjugation of the secondary antibody and DAB staining. This data demonstrates the use of SERPINE2 Antibody (Center) for immunohistochemistry. Clinical relevance has not been evaluated.



**Western Blotting**

**Image 2.** Western blot analysis using SERPINE2 Antibody (Center) Cat.-No AP53863PU-N in MDA-MB435 cell line lysates (35ug/lane). This demonstrates the SERPINE2 antibody detected the SERPINE2 protein (arrow).