

Datasheet for ABIN954763

anti-SRSF11 antibody (C-Term)[Go to Product page](#)**1** Image

Overview

Quantity:	0.4 mL
Target:	SRSF11
Binding Specificity:	AA 365-395, C-Term
Reactivity:	Human
Host:	Rabbit
Clonality:	Polyclonal
Conjugate:	This SRSF11 antibody is un-conjugated
Application:	Western Blotting (WB), Enzyme Immunoassay (EIA)

Product Details

Immunogen:	KLH conjugated synthetic peptide between 365-395 amino acids from the C-terminal region of Human SFRS11 Genename: SFRS11
Isotype:	Ig Fraction
Specificity:	Recognizes SFRS11 (C-term).
Purification:	Protein A column followed by peptide Affinity purification

Target Details

Target:	SRSF11
Alternative Name:	SFRS11 (SRSF11 Products)
Background:	This gene encodes 54-kD nuclear protein that contains an arginine/serine-rich region similar to

Target Details

segments found in pre-mRNA splicing factors. Although the function of this protein is not yet known, structure and immunolocalization data suggest that it may play a role in pre-mRNA processing. Alternative splicing results in multiple transcript variants encoding different proteins. In addition, a pseudogene of this gene has been found on chromosome 12. Synonyms: Arginine-rich 54 kDa nuclear protein, Splicing factor arginine/serine-rich 11

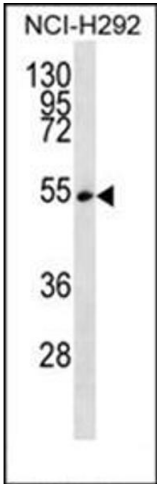
Gene ID:	9295
NCBI Accession:	NP_004759

Application Details

Application Notes:	Optimal working dilution should be determined by the investigator.
Restrictions:	For Research Use only

Handling

Format:	Liquid
Concentration:	0.25 mg/mL
Buffer:	PBS with 0.09 % (W/V) Sodium Azide as preservative
Preservative:	Sodium azide
Precaution of Use:	This product contains sodium azide: a POISONOUS AND HAZARDOUS SUBSTANCE which should be handled by trained staff only.
Handling Advice:	Avoid repeated freezing and thawing.
Storage:	4 °C/-20 °C
Storage Comment:	Store the antibody undiluted at 2-8 °C for one month or (in aliquots) at -20 °C for longer.



Western Blotting

Image 1. Western blot analysis using SFRS11 Antibody (C-term) Cat.-No AP53877PU-N in NCI-H292 cell line lysates (35ug/lane). This demonstrates the SFRS11 antibody detected the SFRS11 protein (arrow).